



An Oshkosh Corporation Business



Each call is different. The situations you encounter are unique to your community. That's why when it comes to designing and building Pierce Rescues, we ask questions. And we listen. We want to create a product that meets your requirements and helps you do your job well. All day; every day. We are committed to creating safe, solid solutions for your Rescue vehicle needs. Please let us know how we can help.



A toolbox that stops sooner, rides smoother, and sees the future.

Make space for everything in a package that brings confidence to all who ride inside. With best-in-class features like TAK-4[®] Independent Front Suspension and Command Zone[™] prognostics, rescue departments can count on the safest, most comfortable transport with unquestionable service. Incident after incident. Year after year.

Explore single-source, bumper-to-bumper rescue configurations:

- Non-Walk-In Rescue
- Walk-In Rescue
- Combination Rescue
- PUC[™] Rescue





What. Where. How. Covered.

Pierce® Non-Walk-In Heavy-Duty Rescues carve out every free cubic inch of storage space in the lower body and atop the roof. Nothing goes to waste. Plus, you get maximum support through our exclusive underslung body support system.

- Maximum custom storage for any major rescue system
- Air tool systems, breathing air systems with compressors, hydraulic rescue tool systems, & winching capabilities
- Custom fabricated shelves & trays



NON-WALK-IN SPECS

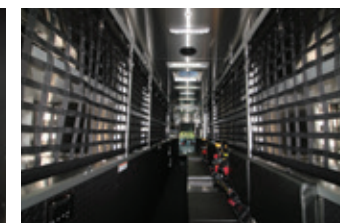
Custom Chassis	Enforcer®, Impel®, Velocity®
Body Lengths	14' single axle to 26' tandem axle
Body Heights	90" to 106"
Body Widths	96" with 28" deep side compartments or 100" with 30" deep side compartments
Doors	Rollup or traditional hinged style
Roof Construction	Double wall hatch construction with treadplate walking surfaces
Roof Access	Traditional side ladder, built-in stair, or center walkway pulldown stair
Body Support	Full front & rear underslung frame-mounted support platforms
Body Construction	Structural tube framing & formed sheet metal body panels throughout
Compartment Storage	Pierce® designed extruded pullout adjustable trays, slideout tilt trays, tool boards, & custom equipment storage racks
Body Material	Aluminum & 304L stainless steel
Body Warranty	15-yr structural



Built around your people.

Whether you need space for rehabilitation, personnel transport, or incident command, Pierce® Walk-In Heavy-Duty Rescues are customized for any level of response. Interiors are configured around specific needs to maximize storage and user capabilities.

- Capacity to integrate complex A/V, network, & radio systems
- Crew seating with storage
- Heating & cooling (HVAC) can be provided for personnel rehab on scene



WALK-IN SPECS

Custom Chassis	Enforcer™, Impel®, Velocity®
Body Lengths	14' single axle to 26' tandem axle
Body Heights	97" to 106"
Body Widths	96" with 28" deep side compartments or 100" with 30" deep side compartments
Doors	Rollup or traditional hinged style
Body Support	Full front & rear underslung frame mounted support platforms
Body Construction	Structural tube framing & formed sheet metal body panels throughout
Interior Storage	Various storage compartment cabinet configurations, seating options, & galley equipment
Compartment Storage	Pierce® designed extruded pullout adjustable trays, slideout tilt trays, tool boards, & custom equipment storage racks
Body Material	Aluminum & 304L stainless steel
Body Warranty	15-yr structural



COMBINATION SPECS

Custom Chassis	Enforcer™, Impel®, Velocity®
Body Lengths	14' single axle to 26' tandem axle
Body Heights	97" to 106"
Body Widths	96" with 28" deep side compartments or 100" with 30" deep side compartments
Doors	Rollup or traditional hinged style
Roof Construction	Double wall hatch construction with treadplate walking surfaces
Roof Access	Traditional side ladder, built-in stair, or center walkway pulldown stair
Body Support	Full front & rear underslung frame-mounted support platforms
Body Construction	Structural tube framing & formed sheet metal body panels throughout
Interior Storage	Various storage compartment cabinet configurations, seating options, & galley equipment
Compartment Storage	Pierce® designed extruded pullout adjustable trays, slideout tilt trays, tool boards, & custom equipment storage racks
Body Material	Aluminum & 304L stainless steel
Body Warranty	15-yr structural

It's a non-walk-in walk-in.

Have big equipment and crew needs? Our combination Heavy-Duty Rescues feature dedicated walk-in and non-walk-in spaces to customize the way you transport, respond, store, and more.

- Numerous seating & operations configurations
- Various interior & compartment storage options
- Tell us how you want it to work – Pierce engineers handle the rest





Big pump and storage capabilities.

PUC™ Heavy-Duty Rescues minimize space used for fire suppression to maximize storage options – while still delivering 1,500 gpm with a single-stage pump.

- Complete pumper capabilities & up to 10,000 lb of gear
- Simplified 2-step pump operations & unmatched service access
- Easier to use, service, & maneuver



PUC SPECS

Custom Chassis	Enforcer™, Impel®, Velocity®
Body Lengths	19' single axle to 26' tandem axle
Body Heights	90" to 106"
Body Widths	100" with 28" deep side compartments
Doors	Rollup or traditional hinged style
Roof Construction	Double wall hatch construction with treadplate walking surfaces
Roof Access	Traditional side ladder, built-in stair, or center walkway pulldown stair
Body Support	Full front & rear underslung frame-mounted support platforms
Body Construction	Structural tube framing & formed sheet metal body panels throughout
Pump	Pierce® PUC™, 1,500 gpm single-stage pump
Tank Capacities	Up to 700 gallons
Equipment Storage	Full NFPA engine complement of equipment & up to 10,000 lb of additional storage capacity
Compartment Storage	Pierce designed extruded pullout adjustable trays, slideout tilt trays, tool boards, & custom equipment storage racks
Body Material	Aluminum & 304L stainless steel
Body Warranty	15-yr structural

APPLICATIONS



DIVE RESCUE

Custom dive units deliver efficient, easy-to-access storage for critical equipment while maximizing space for personnel with bulky gear. Storage capacity and configuration flexibility are optimal to meet the demands of this specialized unit.



EOD RESPONSE

Manage the scene and the threat of explosives. Units may include bomb retrieval robots, detonation devices, special storage, tools, and ramps. Can feature command centers with radio/video equipment plus room for personnel.



URBAN SEARCH & RESCUE

Specially designed for mitigating natural and man-made disasters. Equipment spans the spectrum in rescue and recovery, with air and hydraulic tools, winches and lifting tripods, shoring materials, and cutting equipment.



HEAVY-DUTY RESCUE

Mobile equipment storage center designed to carry any and all types of tools: extrication devices, ladders, backboards, breathing air bottles, medical equipment, salvage, and overhaul equipment.

Pierce® Rescue vehicles are purpose-built.

They are designed around the capabilities that departments need. A few common terms used to define them are:

- Air & Light Support
- HazMat Response
- Heavy-Duty Rescue
- EOD Response
- Urban Search & Rescue
- Dive Rescue
- Tactical Response
- Incident Command

Regardless of what you call them they are designed to do the work that you need them to do.



HAZMAT RESPONSE

Designed for intervention of hazardous materials. Often feature a command center with vast storage for specialized suits, over-pack drums, and decontamination equipment. Can include computer and weather gear, radio/video monitoring, and small labs for analyzing material.



INCIDENT COMMAND

Command-style units used to manage, organize, and monitor incidents for long durations. Include radio/video equipment, as well as room for personnel, food storage, and conference rooms. Police, fire departments, and government agencies often rely on this vehicle type.



AIR & LIGHT SUPPORT

Increase fire scene capabilities with extensive mobile breathing air and light support. Get a variety of bottle fill configurations supplied by bulk storage or endless breathing air supply through mobile compressor units. Light up the scene with fixed or articulating lights in both 120V and 12V light head configurations.



TACTICAL RESPONSE

Designed to operate in a support function. May provide fireground support (personnel, salvage and overhaul equipment, additional SCBA bottles, etc.); rescue support (hydraulic or air tools, air bags, winches, etc.); and/or other specialized support (dive or ice rescue, emergency medical rescue, or below-grade rescue).



PIERCE RESCUES
Meet every mission —
all the time, every time.

www.piercemfg.com



Pierce Manufacturing Inc.
P.O. Box 2017, Appleton WI 54912-2017 USA

Specifications, descriptions, and illustrative material in this literature are as accurate as known at the time of publication, but are subject to change without notice. Illustrations may include optional equipment and accessories and may not include all standard equipment. All measurements are nominal values.

© Pierce Manufacturing Inc., Pierce, the Pierce logo, Dash, Impel, and Velocity are registered trademarks; Command Zone, Impel, and PUC are trademarks; and Perform. Like No Other. is a service mark of Pierce Manufacturing Inc., Appleton, WI.

TAK-4 is a registered trademark of Oshkosh Defense, LLC, Oshkosh, WI. Printed in USA.

All other trademarks are the property of their respective owners.