

# In-Production Photo Report for

Enforcer Heavy Duty Rescue Pumper  
Lisbon Fire Department, ME

Job# 40203

---

Status as of July 10, 2026

In this report your apparatus completed testing then released to quality and graphics where any remaining content will be applied. When finished it will be made ready for your customer acceptance inspection. This is your last scheduled report.





DSC02702



DSC02703



DSC02704



DSC02705



DSC02706



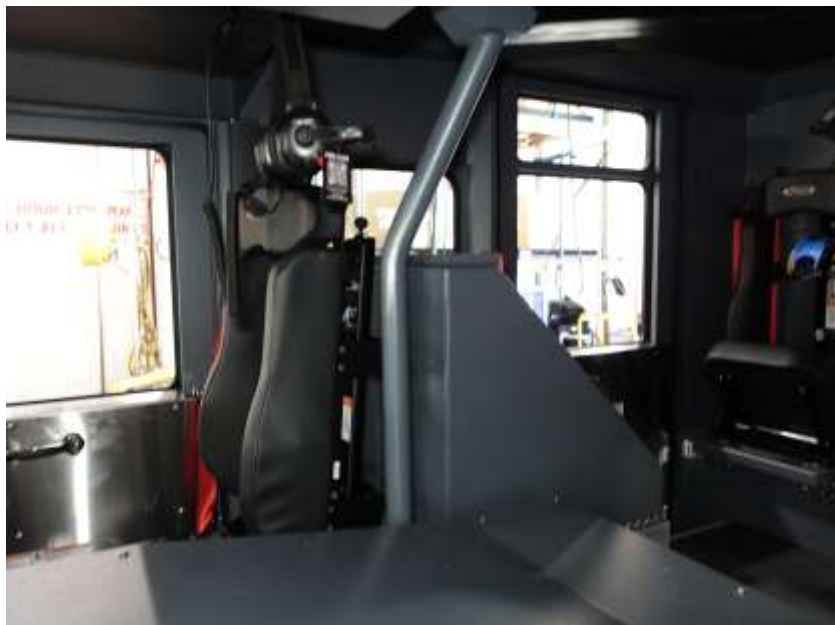
DSC02707



DSC02708



DSC02709



DSC02710



DSC02711



DSC02712



DSC02713



DSC02714



DSC02715



DSC02716



DSC02717



DSC02718



DSC02719



DSC02720



DSC02721



DSC02722



DSC02723



DSC02724



DSC02725



DSC02726



DSC02727



DSC02728



DSC02729



DSC02730



DSC02731



DSC02732



DSC02733



DSC02734



DSC02735



DSC02736



DSC02737



DSC02738



DSC02739



DSC02740



DSC02741



DSC02742



DSC02743



DSC02744



DSC02745



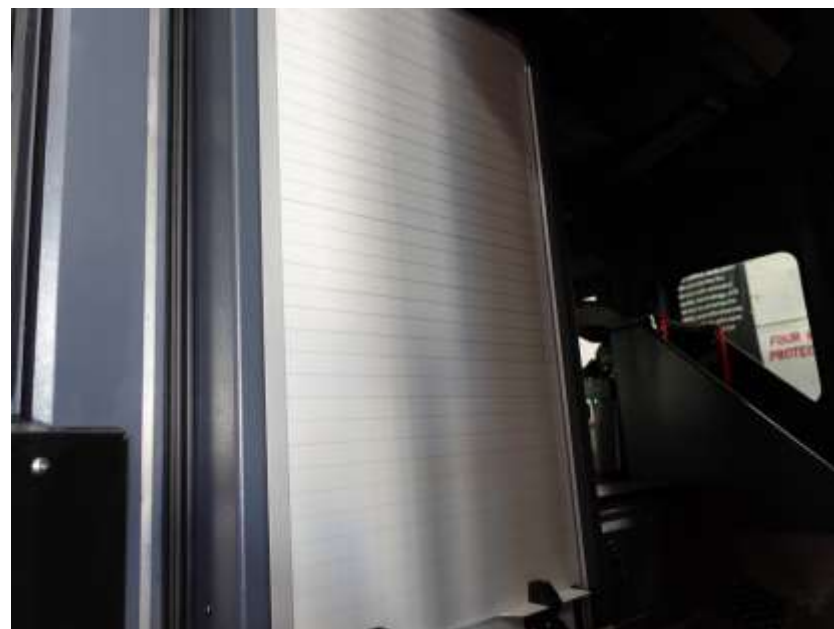
DSC02746



DSC02747



DSC02748



DSC02749



DSC02750



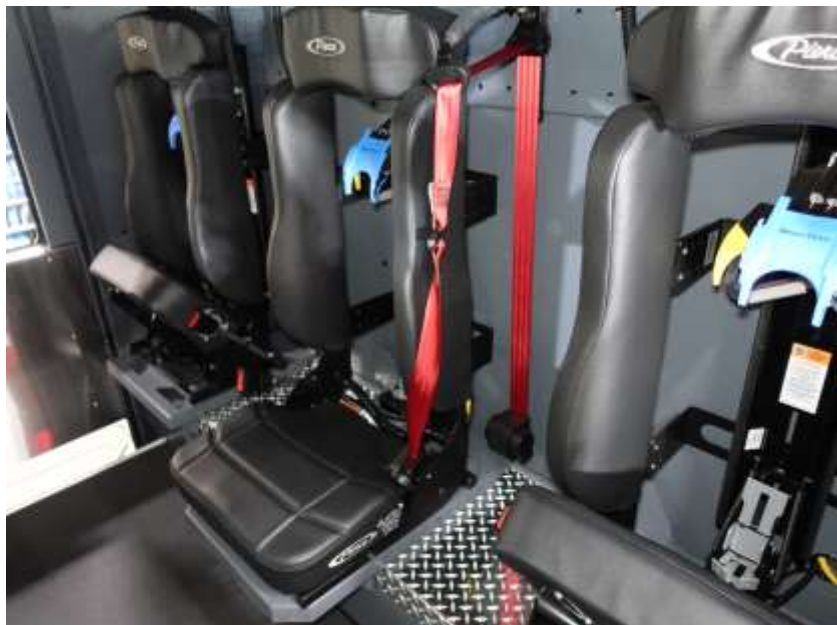
DSC02751



DSC02752



DSC02753



DSC02754



DSC02755



DSC02756



DSC02757



DSC02758



DSC02759



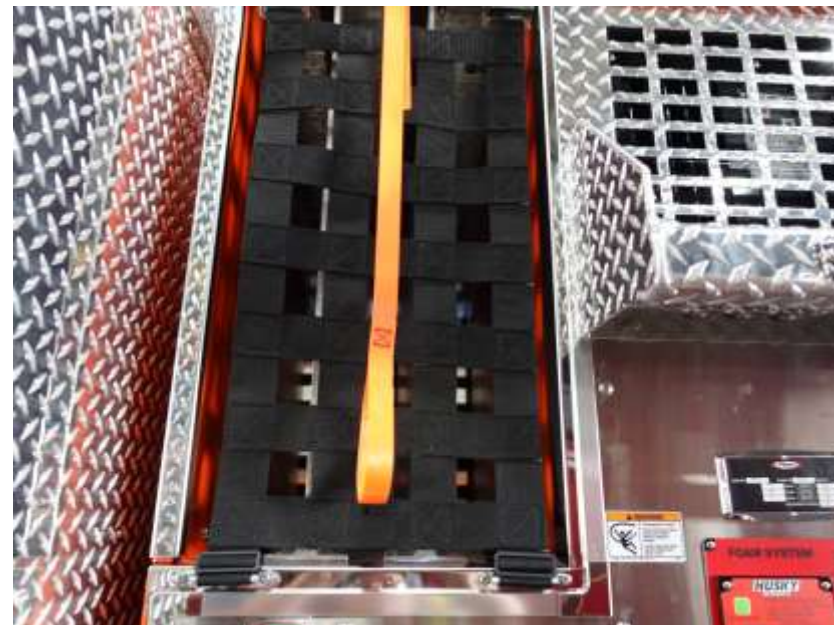
DSC02760



DSC02761



DSC02762



DSC02763



DSC02764



DSC02765



DSC02766



DSC02767



DSC02768



DSC02769



DSC02770



DSC02771



DSC02772



DSC02773



DSC02774



DSC02775



DSC02776



DSC02777



DSC02778



DSC02779



DSC02780



DSC02781



DSC02782



DSC02783



DSC02784



DSC02785



DSC02786



DSC02787



DSC02788



DSC02789



DSC02790



DSC02791



DSC02792



DSC02793



DSC02794



DSC02795



DSC02796



DSC02797



DSC02798



DSC02799



DSC02800



DSC02801



DSC02802



DSC02803



DSC02804



DSC02805



DSC02806



DSC02807



DSC02808



DSC02809



DSC02810



DSC02811



DSC02812



DSC02813



DSC02814



DSC02815



DSC02816



DSC02817



DSC02818



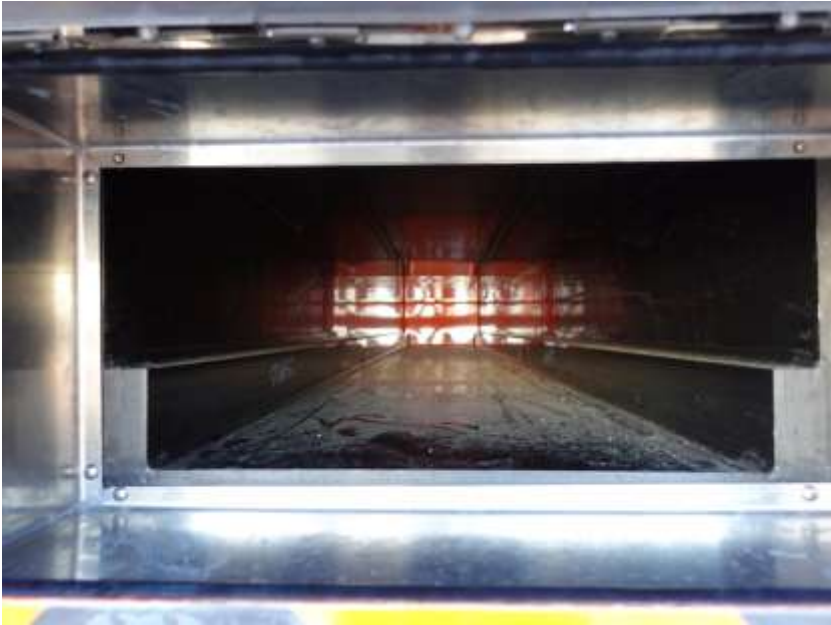
DSC02819



DSC02820



DSC02821



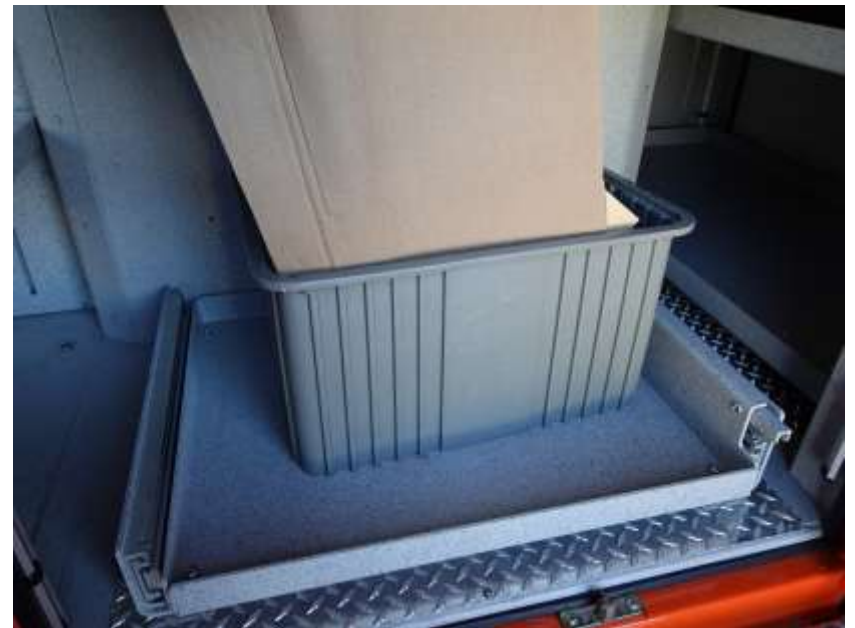
DSC02822



DSC02823



DSC02824



DSC02825



DSC02826



DSC02827



DSC02828



DSC02829



DSC02830



DSC02831



DSC02832



DSC02833



DSC02834



DSC02835



DSC02836



DSC02837



DSC02838



DSC02839



DSC02840



DSC02841



DSC02842



DSC02843



DSC02844



DSC02845



DSC02846



DSC02847



DSC02848



DSC02849



DSC02850



DSC02851



DSC02852



DSC02853



DSC02854



DSC02855



DSC02856



DSC02857



DSC02858



DSC02859



DSC02860



DSC02861



DSC02862



DSC02863



DSC02864



DSC02865



DSC02866



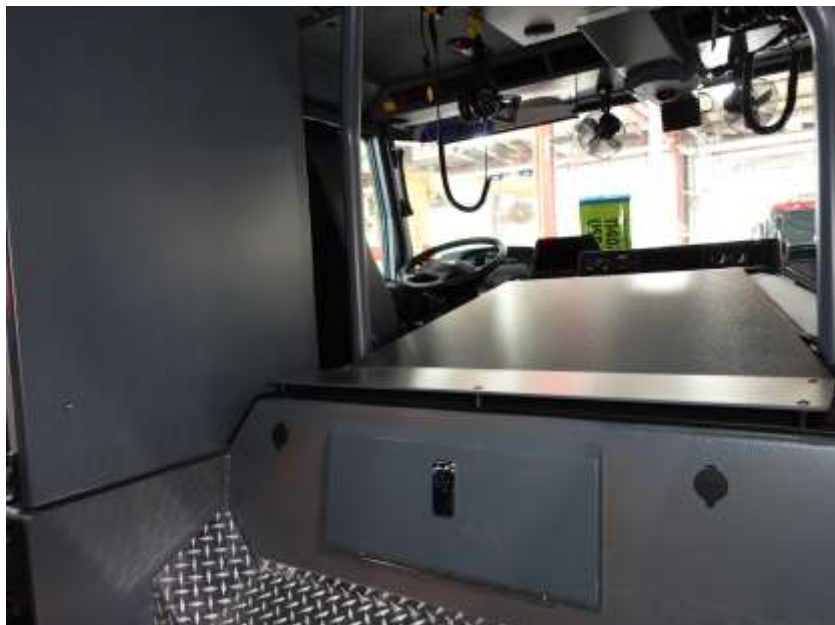
DSC02867



DSC02868



DSC02869



DSC02870



DSC02871



DSC02872



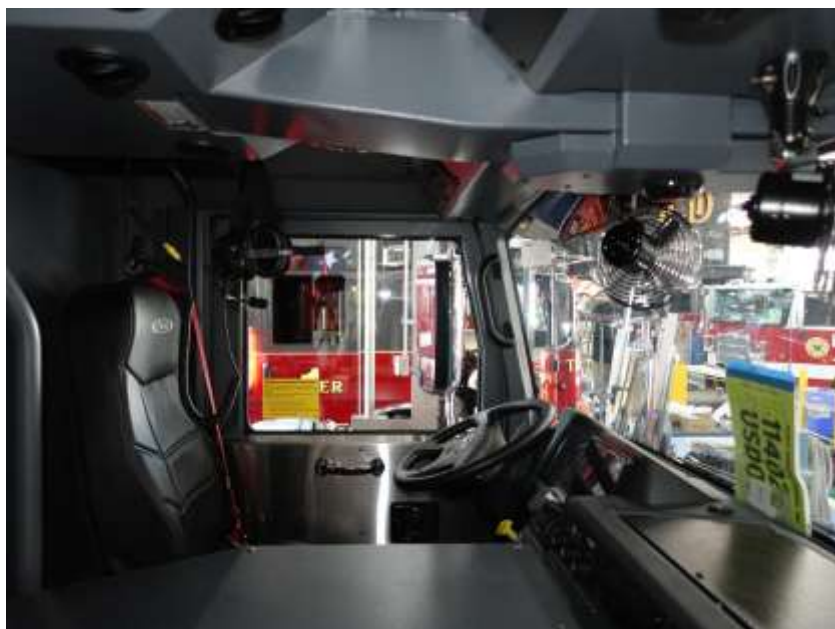
DSC02873



DSC02874



DSC02875



DSC02876



DSC02877



DSC02878



DSC02879



DSC02880



DSC02881





DSC02886



DSC02887



DSC02888



DSC02889



DSC02890



DSC02891



DSC02892



DSC02893



DSC02895



DSC02896



DSC02897



DSC02898



DSC02899



DSC02900



DSC02901



# ALLEGIANCE<sup>TM</sup>

FIRE & RESCUE



<https://allegiancefr.com>



An Oshkosh Corporation Company