

# In-Production Photo Report for

Enforcer Heavy Duty Rescue Pumper  
Lisbon Fire Department, ME

Job# 40203

---

Status as of June 05, 2026

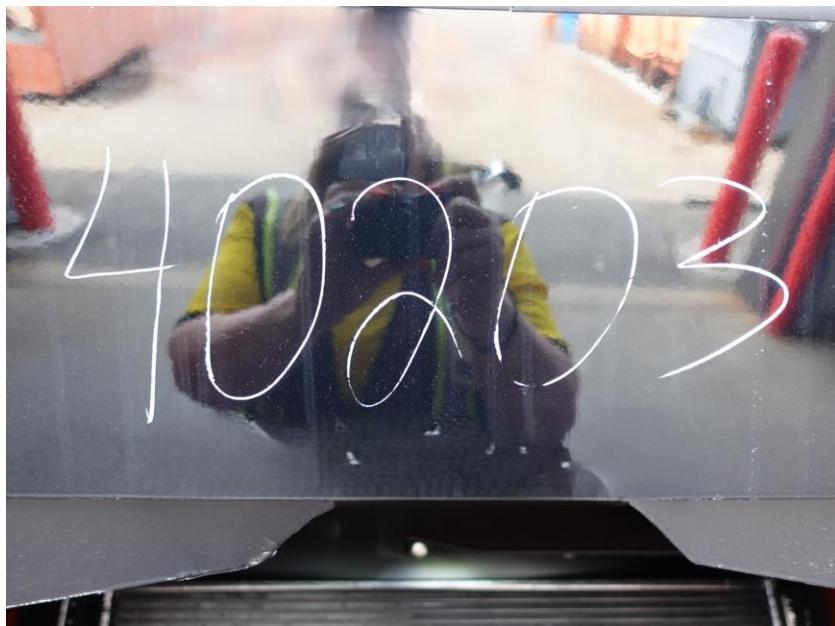
In this report your cab, pump house and body were merged with the frame at the start of initial apparatus assembly. In the next report your apparatus may complete initial assembly and begin final assembly.



An Oshkosh Corporation Company

*For Valued Customers of*





DSC04624



DSC04625



DSC04626



DSC04627



DSC04628



DSC04629



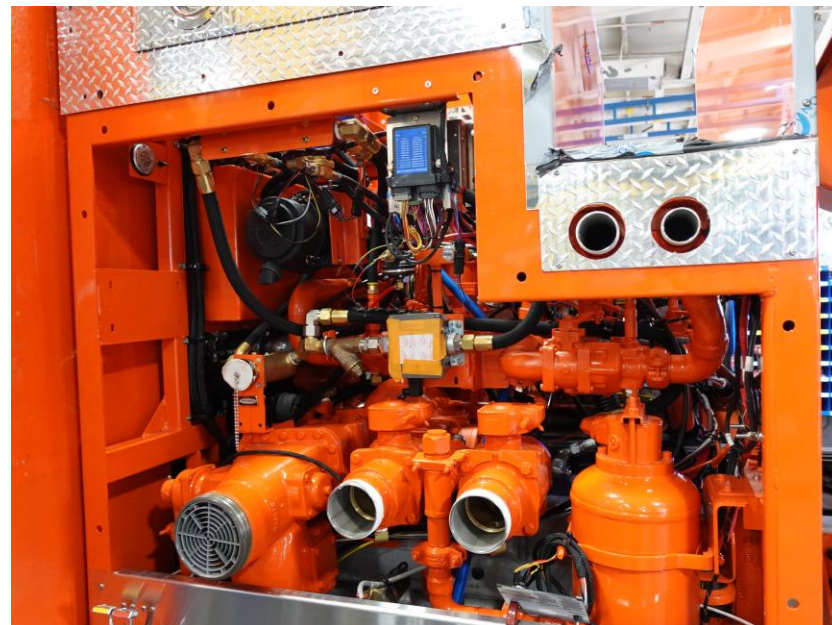
DSC04630



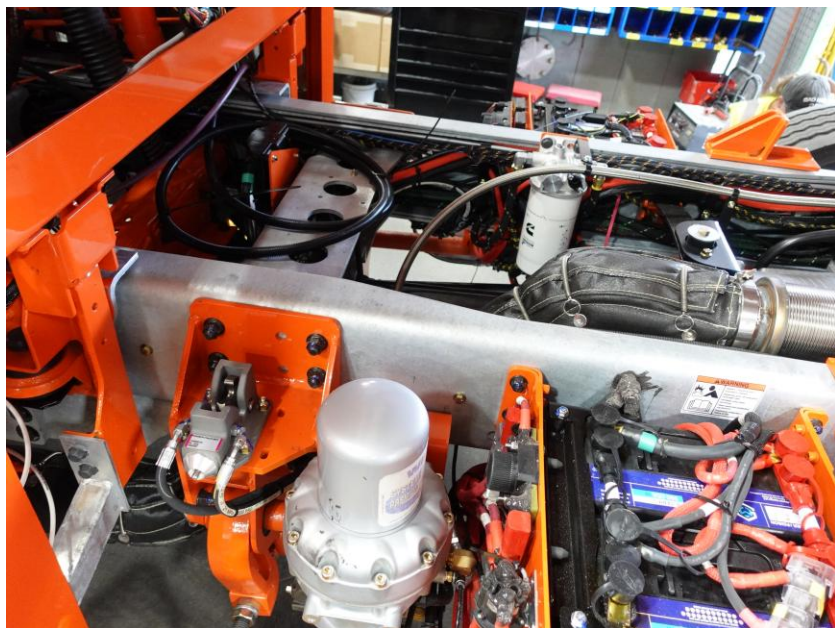
DSC04631



DSC04632



DSC04633



DSC04634



DSC04635



DSC04636



DSC04637



DSC04638



DSC04639



# ALLEGIANCE<sup>TM</sup>

FIRE & RESCUE



<https://allegiancefr.com>



An Oshkosh Corporation Company