

# In-Production Photo Report for

Enforcer Heavy Duty Rescue Pumper  
Lisbon Fire Department, ME

Job# 40203

---

Status as of May 16, 2026

In this report your cab continued through paint, the pump house was painted then continued initial assembly, and the body completed fabrication (no photos). In the next report your cab may complete the paint process, the pump house may continue initial assembly, and the body may be available to photograph.





DSC03288



DSC03289



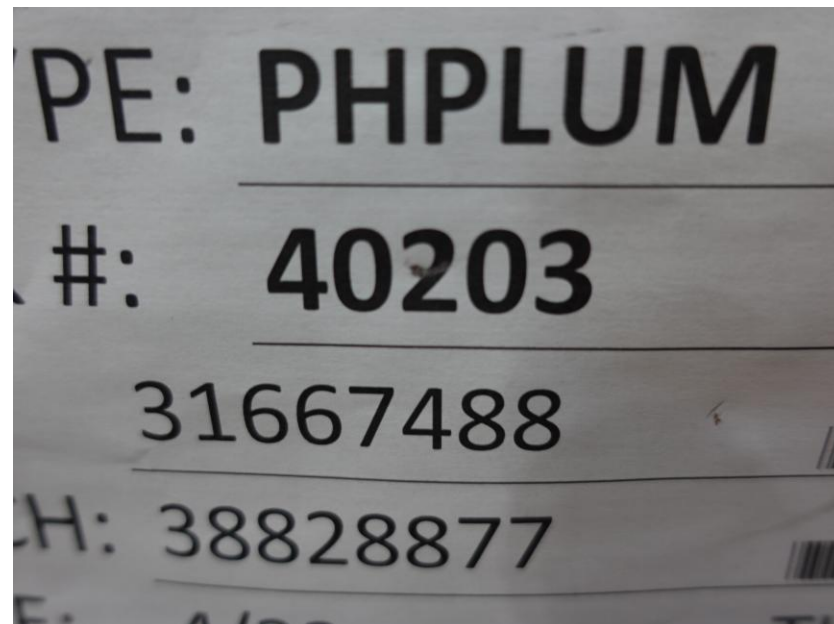
DSC03290



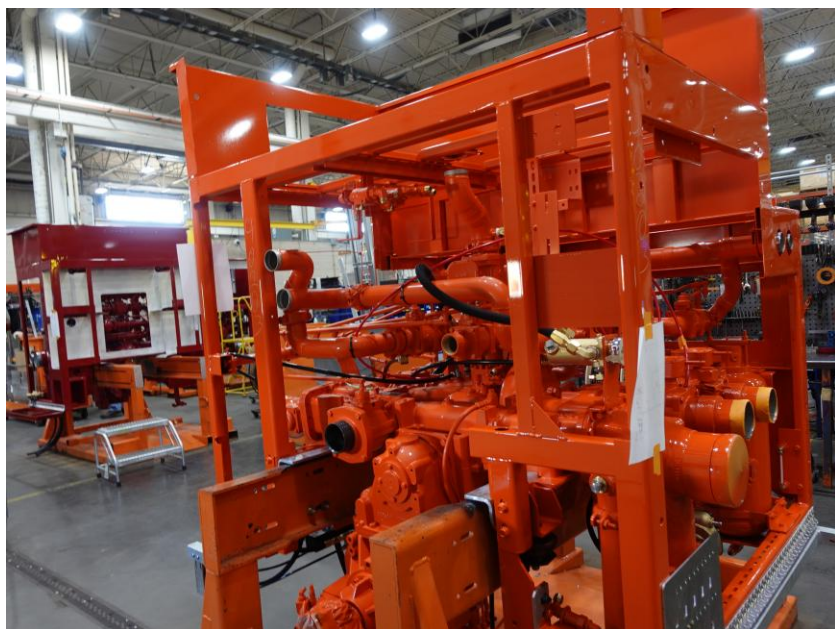
DSC03291



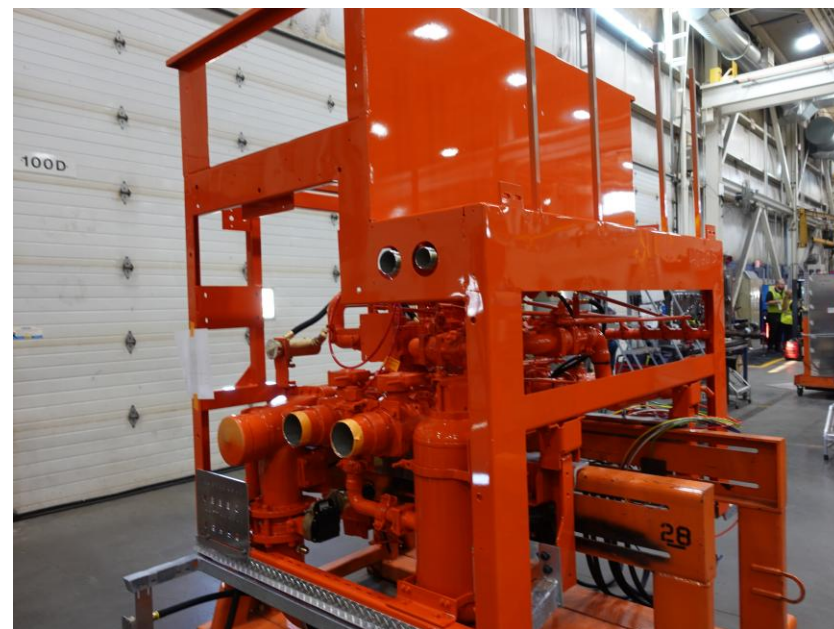
DSC03292



DSC04106



DSC04107



DSC04108



DSC04109



DSC04110



# ALLEGIANCE<sup>TM</sup>

FIRE & RESCUE



<https://allegiancefr.com>



An Oshkosh Corporation Company