

# In-Production Photo Report for

Enforcer Heavy Duty Rescue Pumper  
Lisbon Fire Department, ME

Job# 40203

---

Status as of May 22, 2026

In this report your cab completed paint, the frame build began, the pump house completed initial assembly, and the body began the paint process. In the next report your cab may begin initial assembly, the frame build may continue, the pump house may remain staged, and the body may continue through paint.





DSC01105



DSC01106



DSC01107



DSC01109



DSC01110



DSC01111



DSC01112



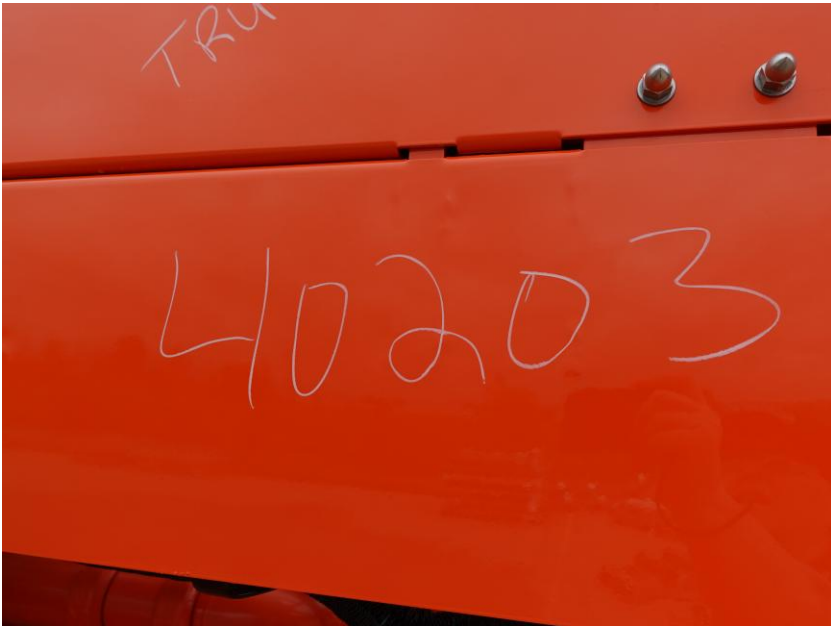
DSC01113



DSC01114



DSC01115



DSC04014



DSC04015



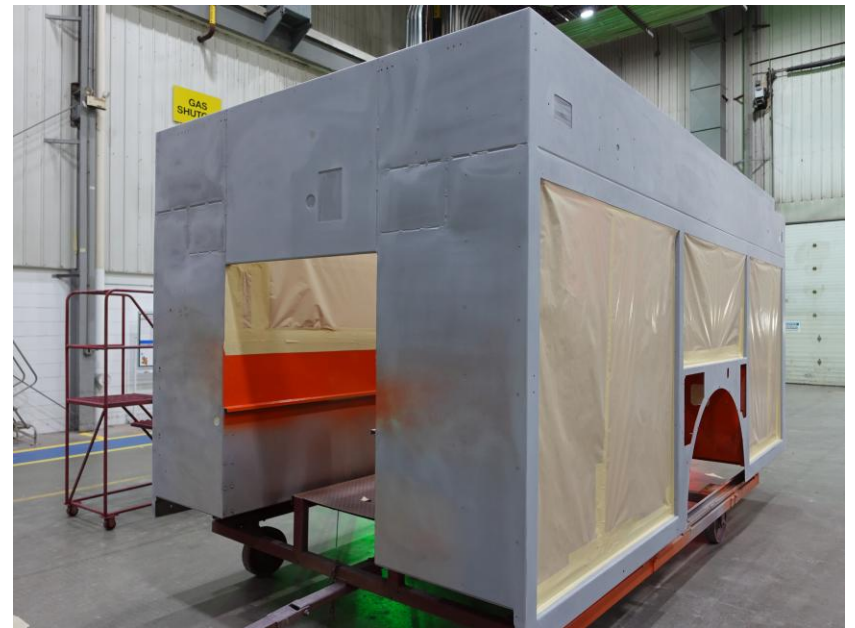
DSC04016



DSC04017



DSC04018



DSC02281



DSC02282



DSC02283



DSC02284



# ALLEGIANCE<sup>TM</sup>

FIRE & RESCUE



<https://allegiancefr.com>



An Oshkosh Corporation Company