

In-Production Photo Report for

Enforcer Pumper

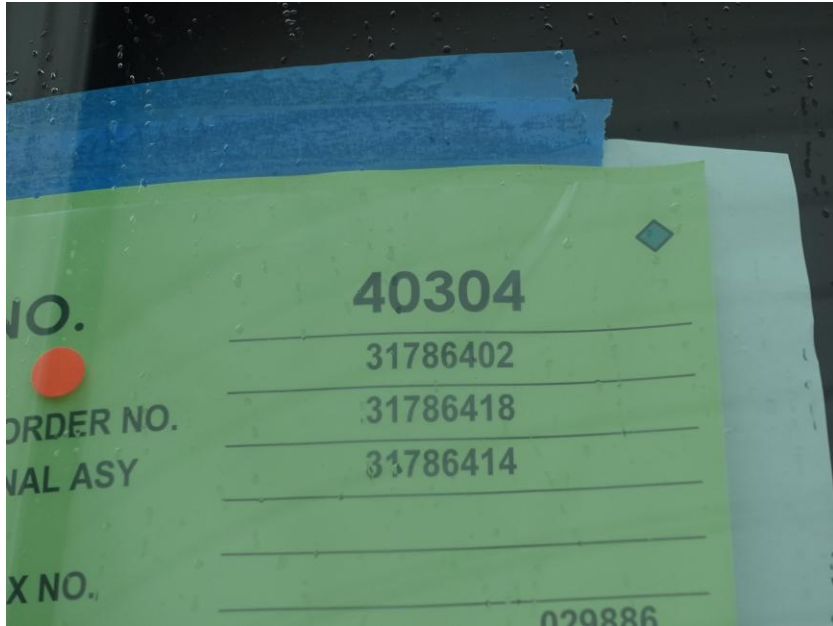
Saugus Fire Department, MA

Job# 40304

Status as of June 19, 2026

In this report your cab and pump house were merged with the frame followed by body installation. In the next report your apparatus may complete initial assembly and begin final assembly.





DSC04777



DSC04778



DSC04779



DSC04780



DSC04781



DSC04782



DSC04783



DSC04784



DSC04785



DSC01170



DSC01171



DSC01172



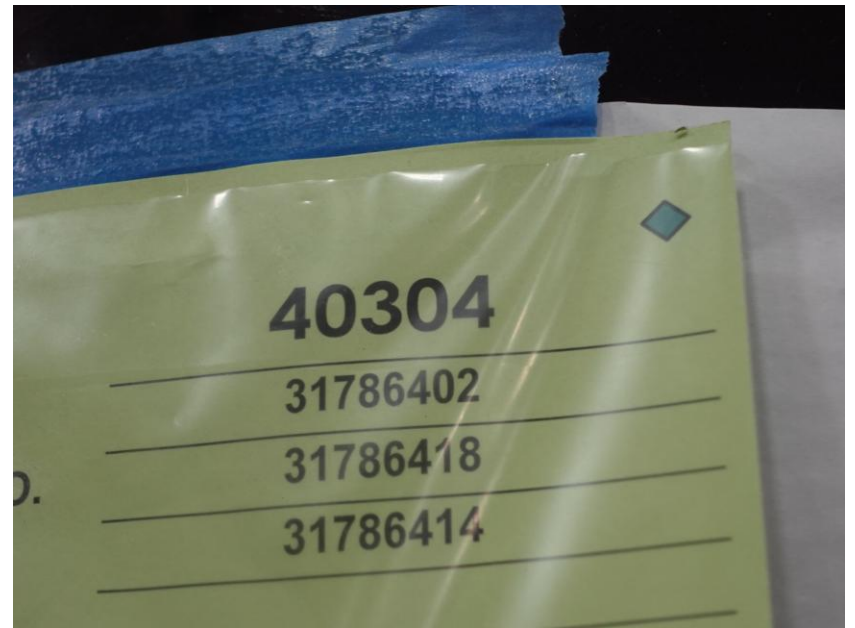
DSC01173



DSC01174



DSC01175



DSC04833



DSC04834



DSC04835



DSC04836



DSC04837



DSC04838



ALLEGIANCETM

FIRE & RESCUE



<https://allegiancefr.com>



An Oshkosh Corporation Company