

In-Production Photo Report for

Enforcer Pumper

Saugus Fire Department, MA

Job# 40304

Status as of May 22, 2026

In this report your cab completed paint, the pump house began initial assembly, and the body began fabrication. In the next report your cab may begin initial assembly, the pump house may continue initial assembly, and the body may complete the fabrication process.





DSC02512



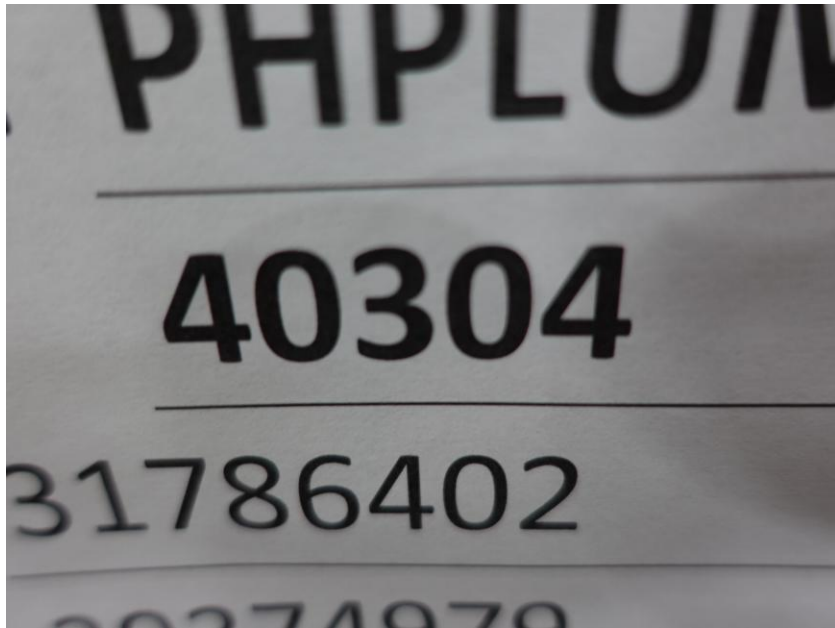
DSC02513



DSC02514



DSC02515



DSC04053



DSC04054



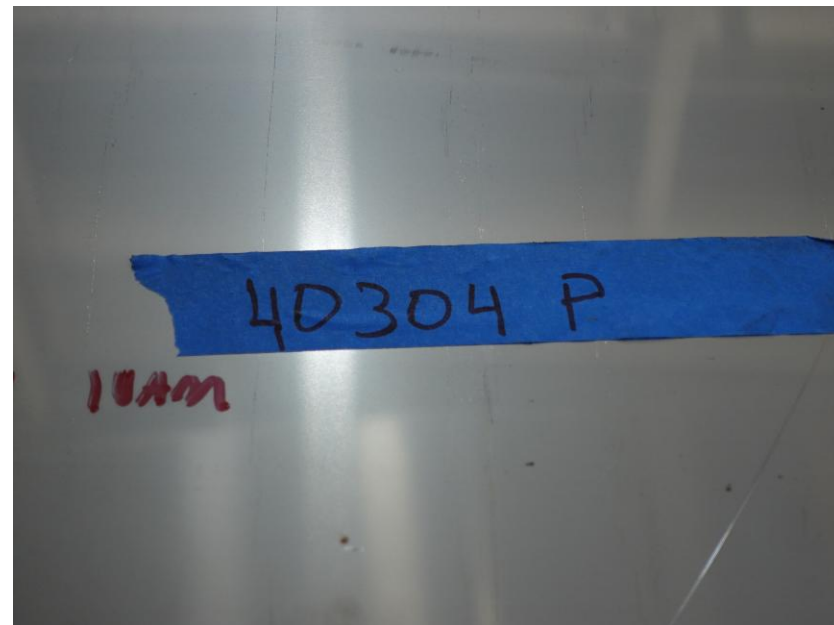
DSC04055



DSC04056



DSC04057



DSC04083



DSC04084



DSC04085



DSC04086



ALLEGIANCETM

FIRE & RESCUE



<https://allegiancefr.com>



An Oshkosh Corporation Company