

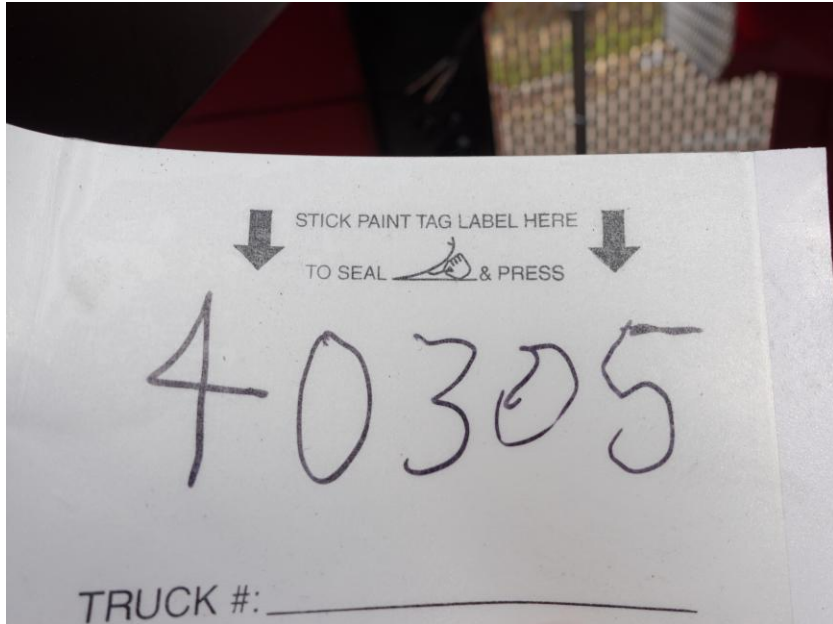
In-Production Photo Report for

Enforcer Tanker/Pumper
Winhall Fire Department, VT
Job# 40305

Status as of May 15, 2026

In this report your cab completed paint and began initial assembly, the pump house was painted then started initial assembly, and the body began fabrication. In the next report your cab may continue initial assembly, the pump house may continue initial assembly, and the body may complete the fabrication process.





DSC03613



DSC03614



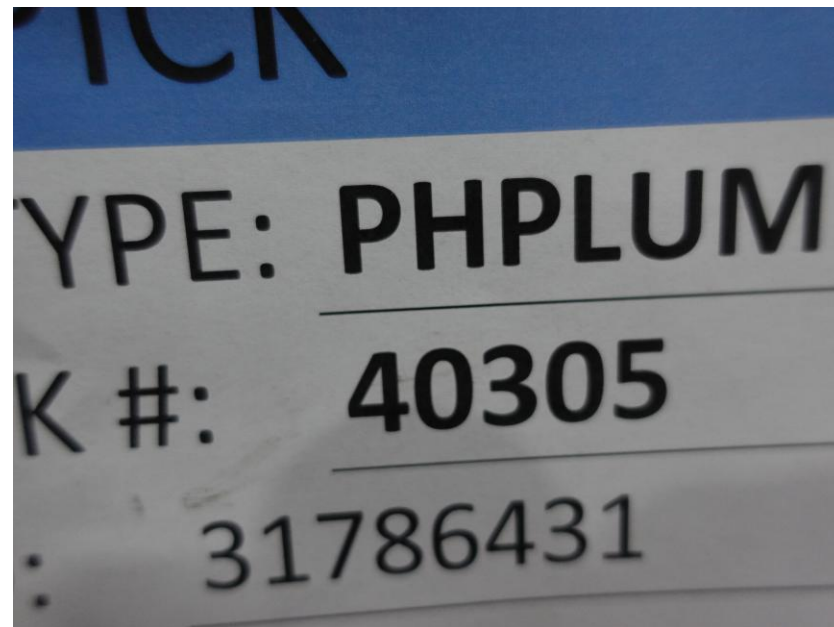
DSC03615



DSC03616



DSC03617



DSC04075



DSC04076



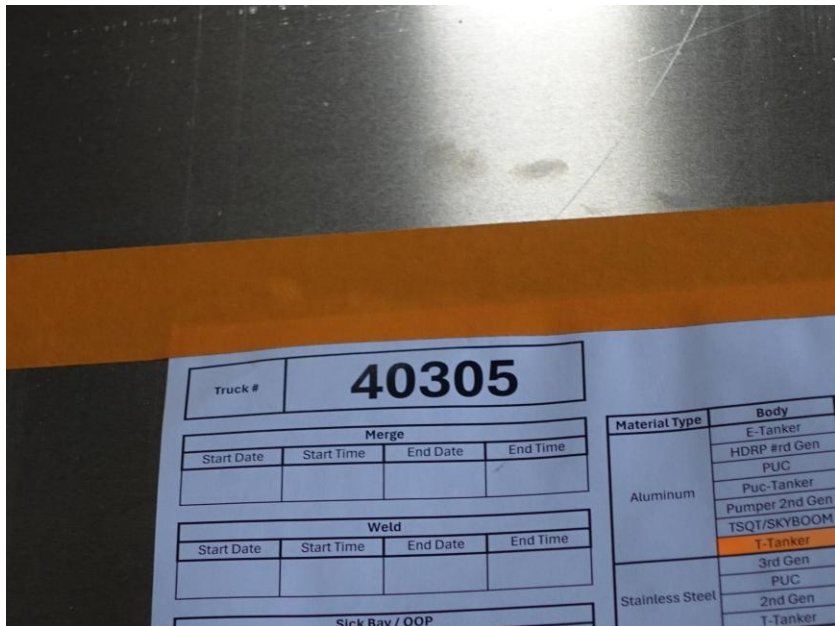
DSC04077



DSC04078



DSC04079



DSC04043



DSC04044



DSC04045



DSC04046



DSC04047



ALLEGIANCETM

FIRE & RESCUE



<https://allegiancefr.com>



An Oshkosh Corporation Company