

In-Production Photo Report for

Enforcer Aerial

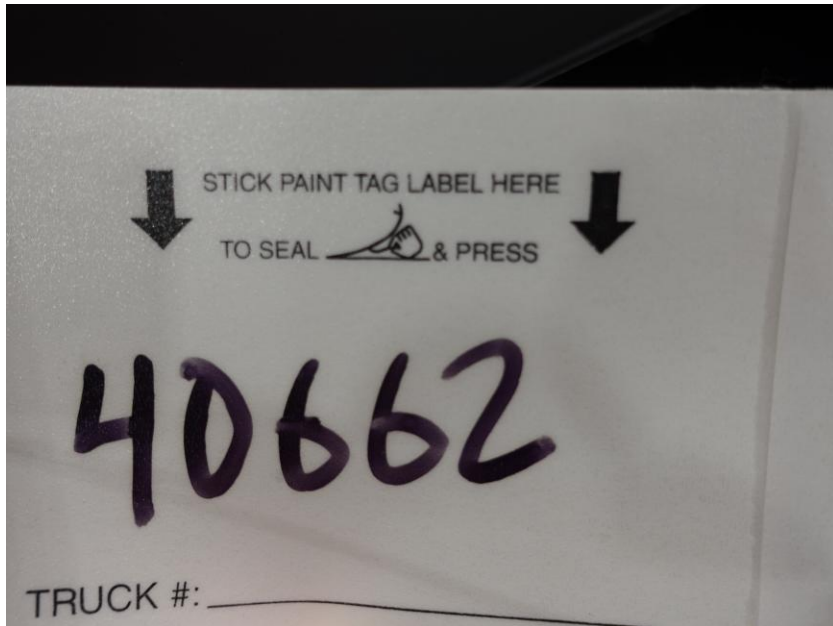
Berlin Fire Department, NH

Job# 40662

Status as of June 12, 2026

In this report your cab was merged with the frame, the transverse continued fabrication, the torque box arrived and was staged, and the body remained staged. In the next report chassis may be staged to continue assembly, the transverse may complete fabrication, the torque box may begin initial assembly, and the body may begin initial assembly.





DSC01232



DSC01233



DSC01234



DSC01235



DSC01236



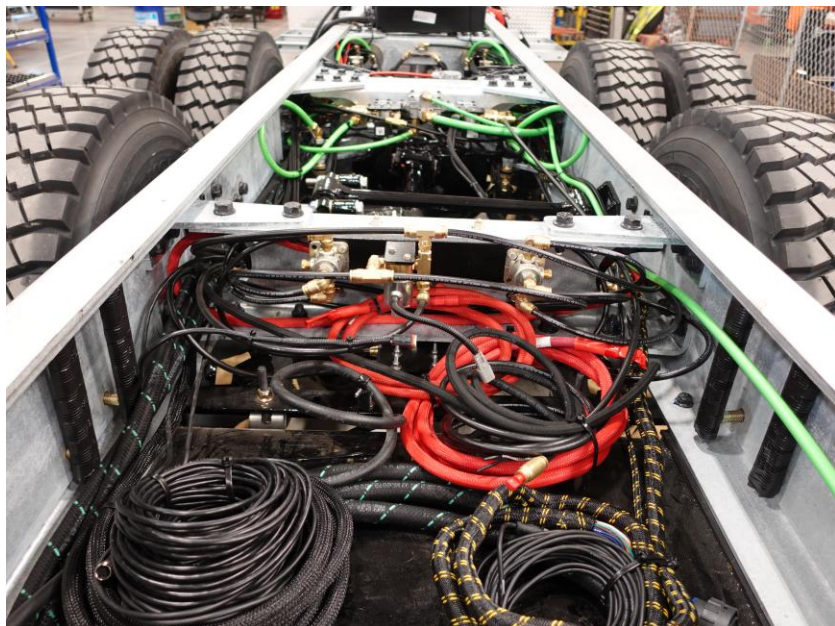
DSC01237



DSC01238



DSC01239



DSC01240



DSC01241



DSC01242



DSC01243



DSC01244



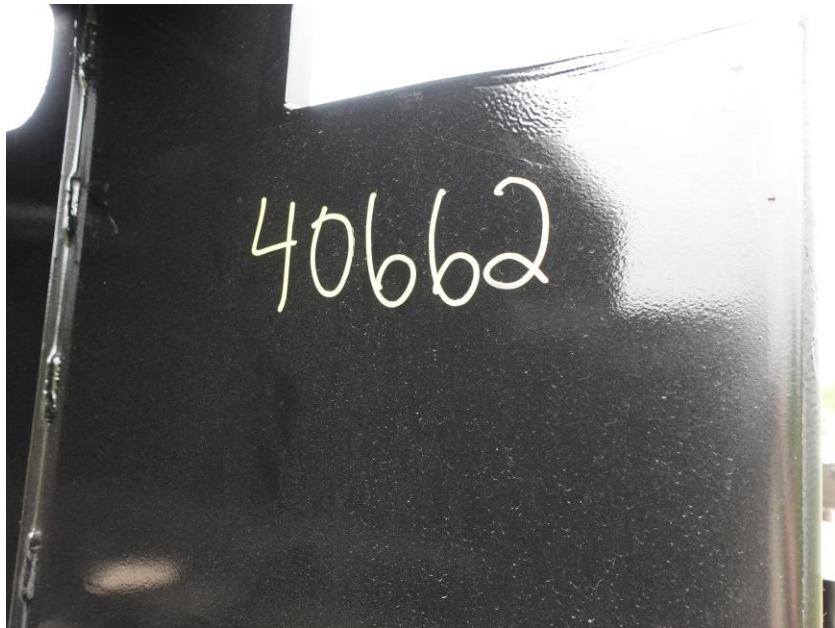
DSC04333



DSC04334



DSC04335



DSC04259



DSC04260



DSC04261



DSC04828



DSC04829



DSC04830



DSC04831



DSC04832



ALLEGIANCETM

FIRE & RESCUE



<https://allegiancefr.com>



An Oshkosh Corporation Company