

In-Production Photo Report for

Enforcer Aerial

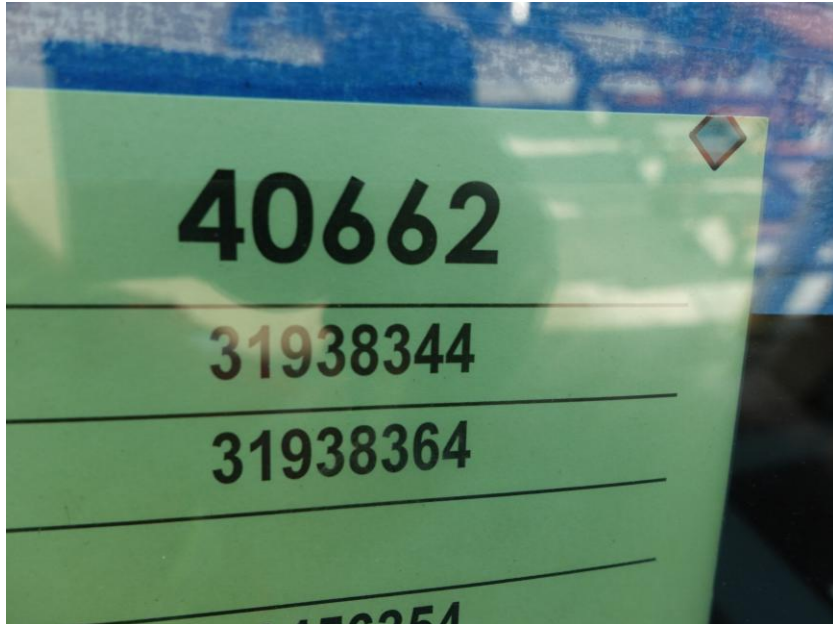
Berlin Fire Department, NH

Job# 40662

Status as of June 19, 2026

In this report your chassis continued assembly, the transverse continued fabrication, the torque box began initial assembly, and the body was in queue to begin initial assembly. In the next report the torque box may be merged with the chassis, the transverse may complete fabrication and begin the paint process, and the body may begin initial assembly.





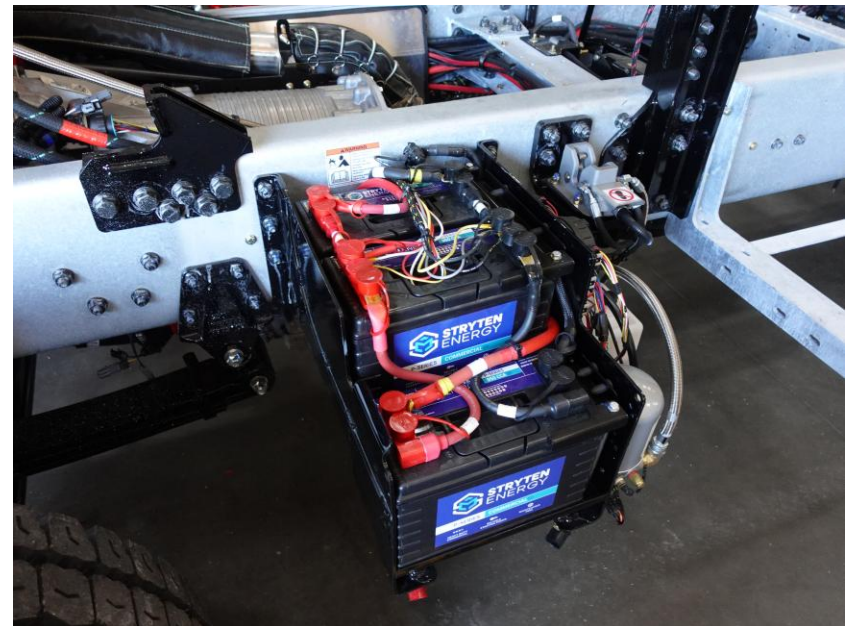
DSC04089



DSC04090



DSC04091



DSC04092



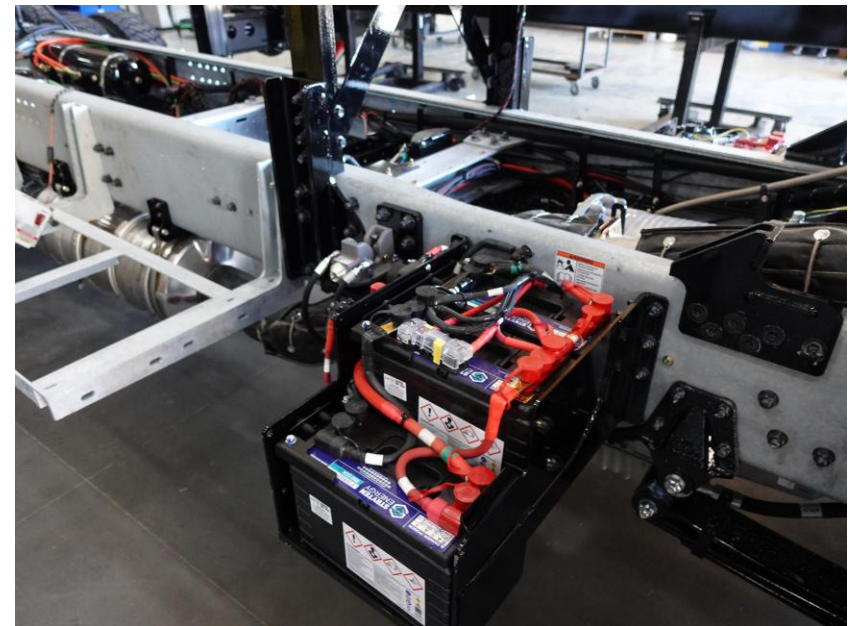
DSC04093



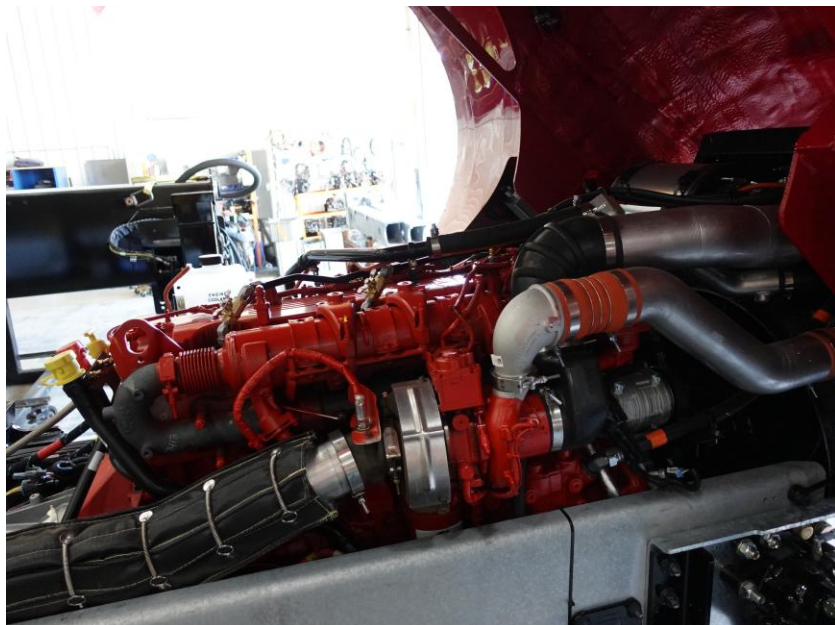
DSC04094



DSC04095



DSC04096



DSC04097



DSC04098



DSC04099



DSC04100



DSC04101



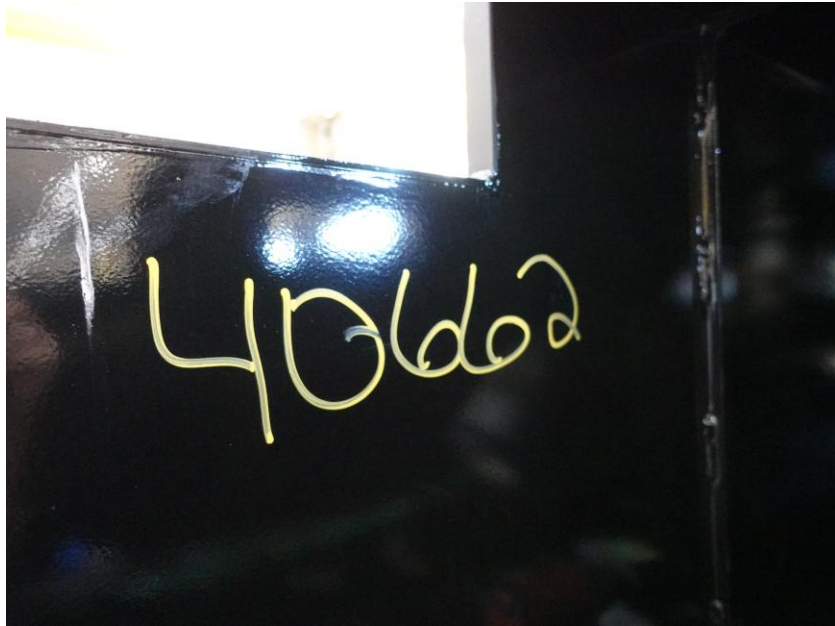
DSC04212



DSC04213



DSC04214



DSC04086



DSC04087



DSC04088



DSC02372



DSC02373



DSC02374



DSC02375



DSC02376



ALLEGIANCETM

FIRE & RESCUE



<https://allegiancefr.com>



An Oshkosh Corporation Company