

In-Production Photo Report for

Enforcer Aerial

Berlin Fire Department, NH

Job# 40662

Status as of June 26, 2026

In this report the torque box was merged with the chassis, the transverse began the paint process, and the body completed initial assembly. In the next report the transverse may complete paint and be merged with the chassis followed by body installation.

Due to limited staffing and the Pierce facilities 4th of July shut down next week, your next scheduled report is week ending July 11, 2026.





DSC04405



DSC04406



DSC04407



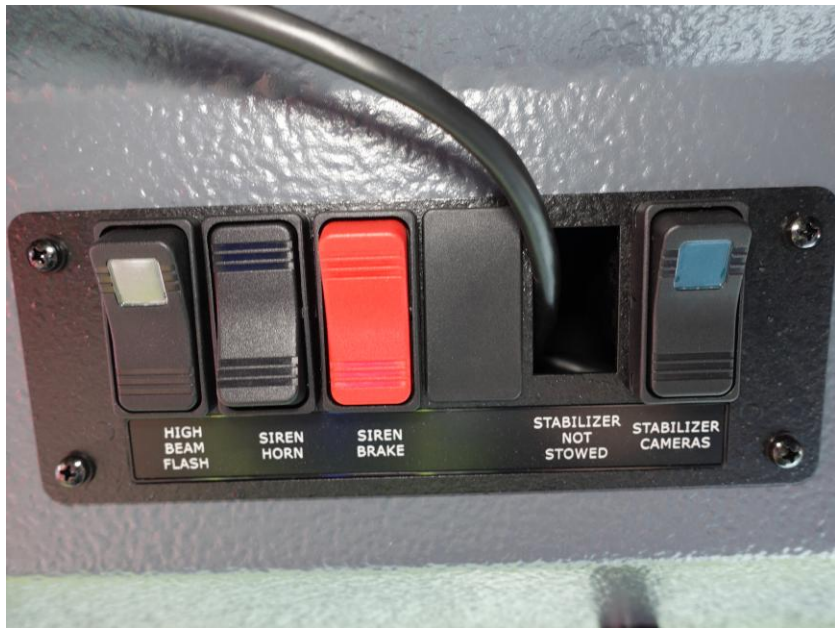
DSC04408



DSC04409



DSC04410



DSC04411



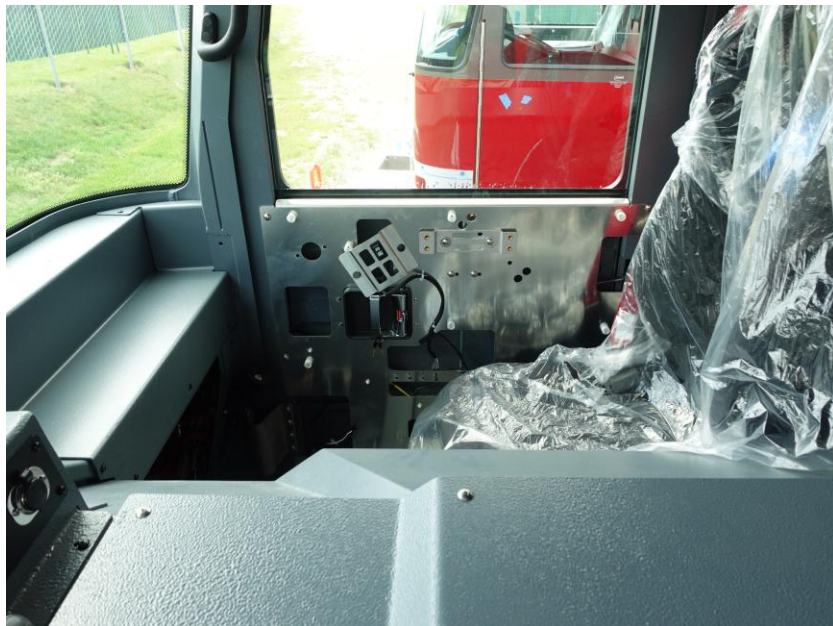
DSC04412



DSC04413



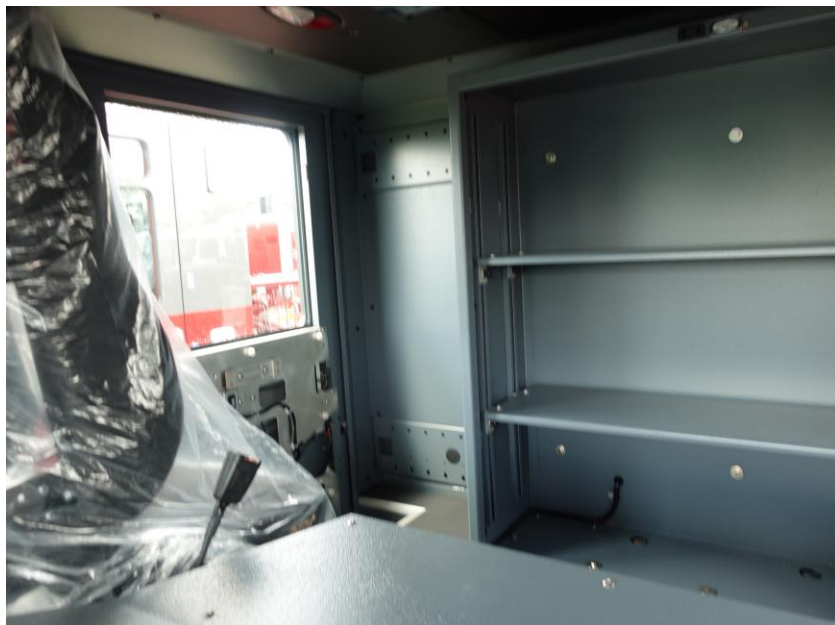
DSC04414



DSC04415



DSC04416



DSC04417



DSC04418



DSC04419



DSC04420



DSC04421



DSC04422



DSC04423



DSC04424



DSC04425



DSC04426



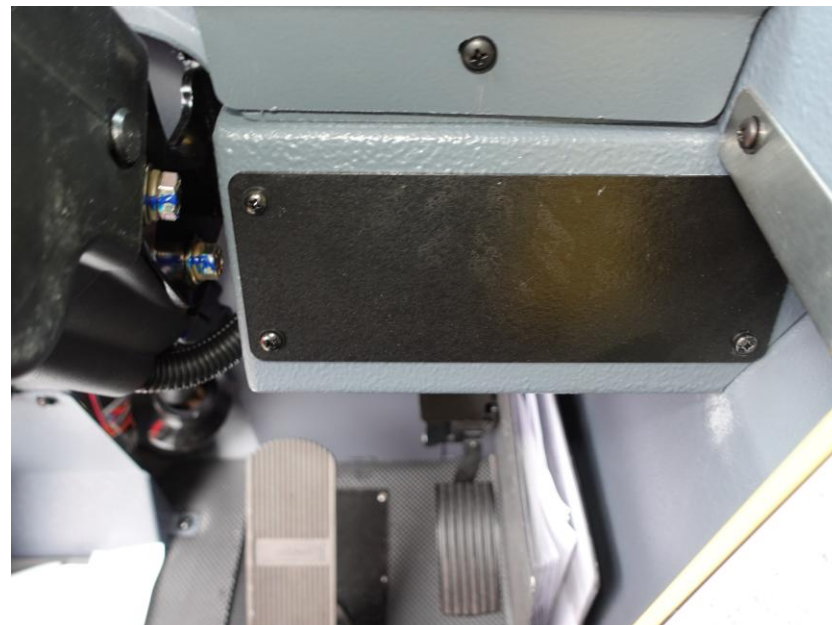
DSC04427



DSC04428



DSC04429



DSC04430



DSC04431



DSC04432



DSC04433



DSC04434



DSC04435



DSC04436



DSC04437



DSC04438



DSC04439



DSC04440



DSC04441



DSC04442



DSC04443



DSC04444



DSC04445



DSC04446



DSC04447



DSC04448



DSC04449



DSC04450



DSC04451



DSC04452



DSC04453



DSC04454



DSC04455



DSC04456



DSC04457



DSC04458



DSC04459



DSC04460



DSC04461



DSC04462



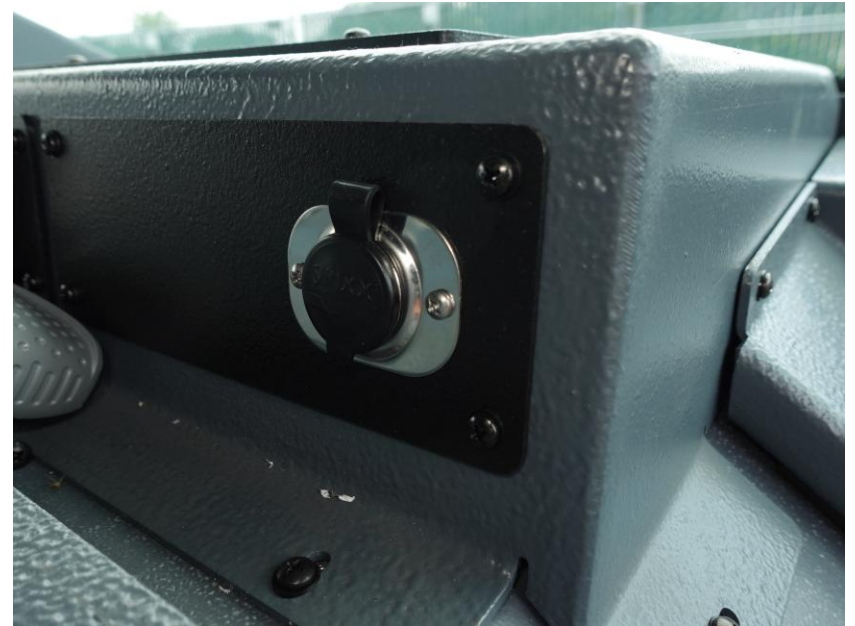
DSC04463



DSC04464



DSC04465



DSC04466



DSC04467



DSC04468



DSC04469



DSC04470



DSC04471



DSC04472



DSC04473



DSC04474



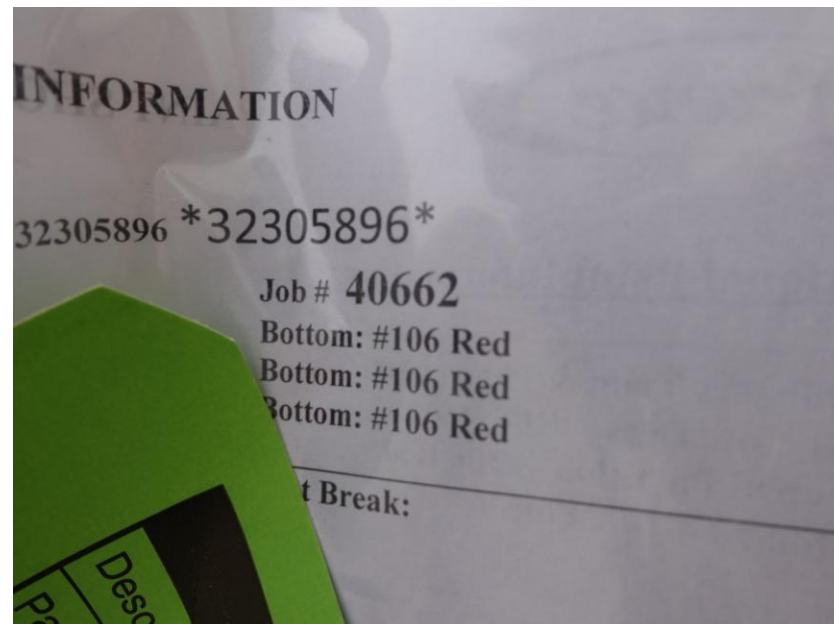
DSC04475



DSC04476



DSC04477



DSC02107



DSC02108



DSC02109



DSC04866



DSC04867



DSC04868



DSC04869



DSC04870



ALLEGIANCETM

FIRE & RESCUE



<https://allegiancefr.com>



An Oshkosh Corporation Company