

# In-Production Photo Report for

Enforcer Pumper

Atkinson Fire Department, NH

Job# 41623

---

Status as of April 17, 2026

In this report your cab completed initial assembly, the frame build began, the pump house completed initial assembly, and the body completed paint and was staged.

In the next report your cab may be staged, the frame build may continue, the pump house may be staged, and the body may remain staged to begin initial assembly.



An Oshkosh Corporation Company

*For Valued Customers of*





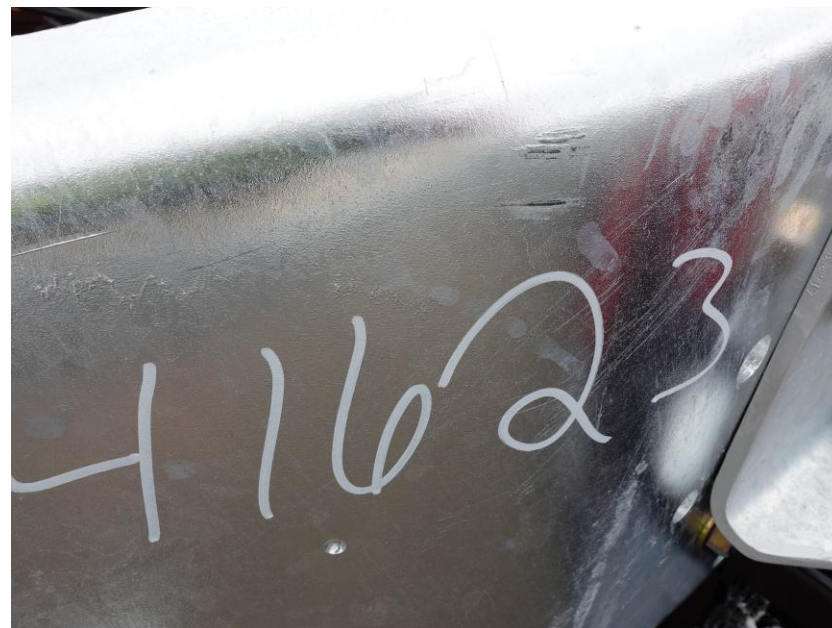
DSC02042



DSC02043



DSC02044



DSC02193



DSC02194



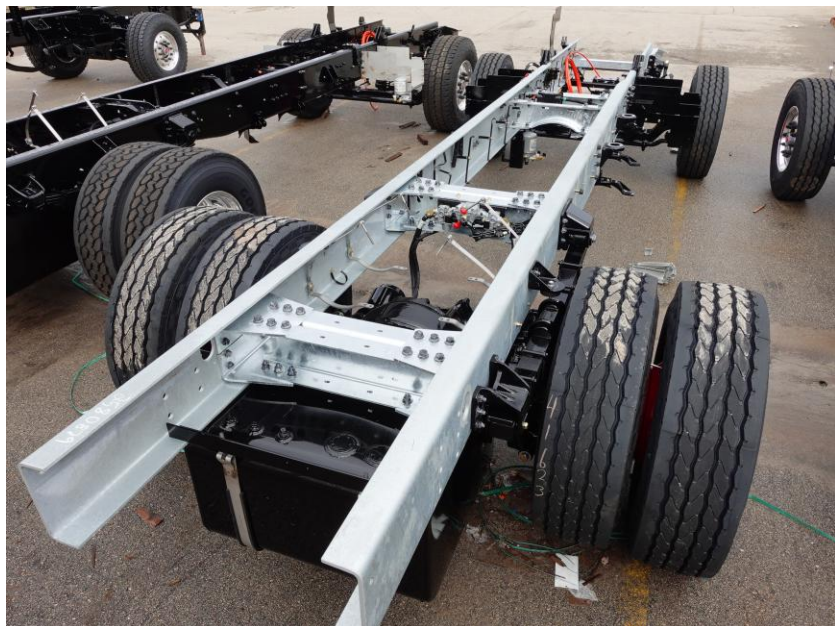
DSC02195



DSC02196



DSC02197



DSC02198



DSC02199



DSC04039



DSC04040



DSC04041



DSC04042



DSC04043



DSC04499



DSC04500



DSC04501



DSC04502



DSC04503



# ALLEGIANCE<sup>TM</sup>

FIRE & RESCUE



<https://allegiancefr.com>



An Oshkosh Corporation Company