

In-Production Photo Report for

Enforcer Pumper

Atkinson Fire Department, NH

Job# 41623

Status as of April 24, 2026

In this report your cab was staged, the frame build continued, the pump house was staged, and the body completed initial assembly. In the next report your cab and pump house may be merged with the frame followed by body installation at the start of initial apparatus assembly.





DSC02230



DSC02231



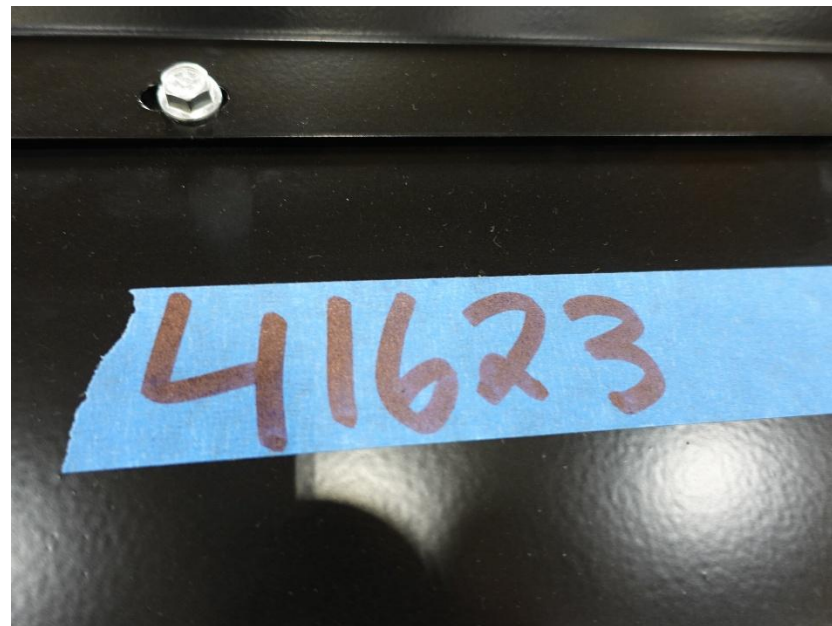
DSC02232



DSC02233



DSC02234



DSC02319



DSC02320



DSC02321



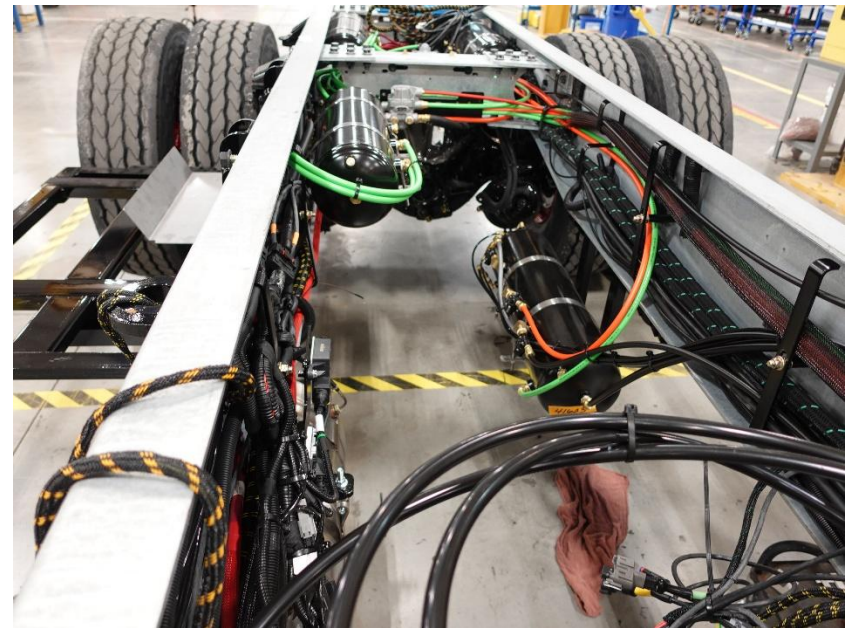
DSC02322



DSC02323



DSC02324



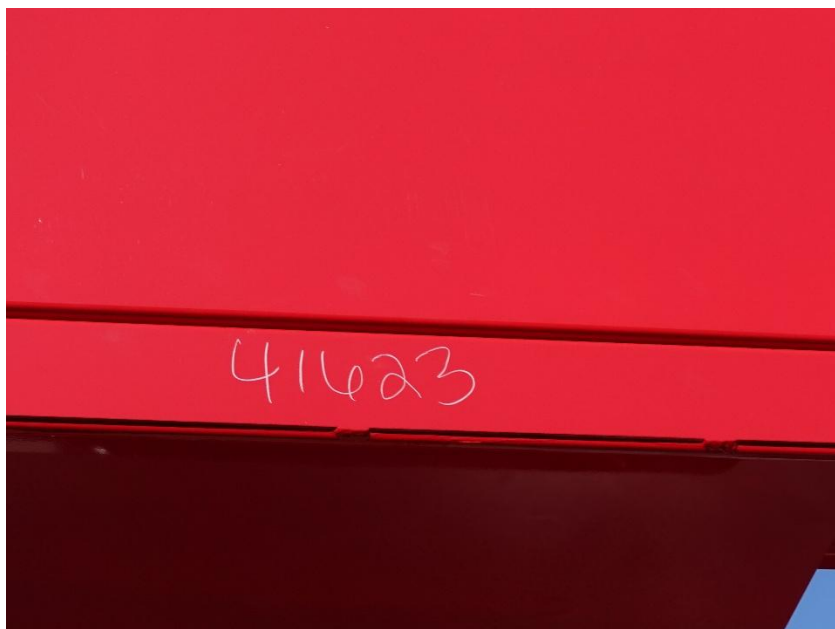
DSC02325



DSC02326



DSC02327



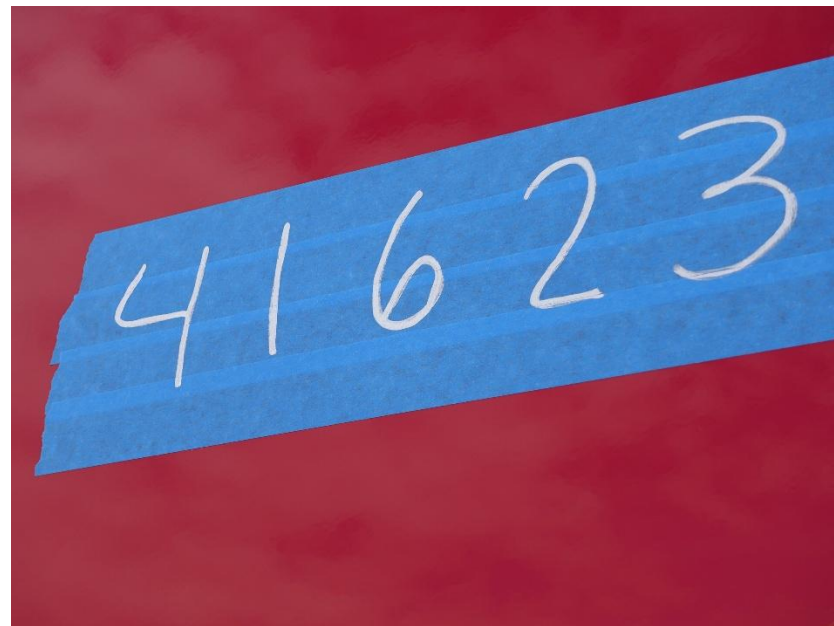
DSC04163



DSC04164



DSC04165



DSC02785



DSC02786



DSC02787



DSC02788



DSC02789



ALLEGIANCETM

FIRE & RESCUE



<https://allegiancefr.com>



An Oshkosh Corporation Company