

# In-Production Photo Report for

Freightliner Tanker

Litchfield Fire Department, ME

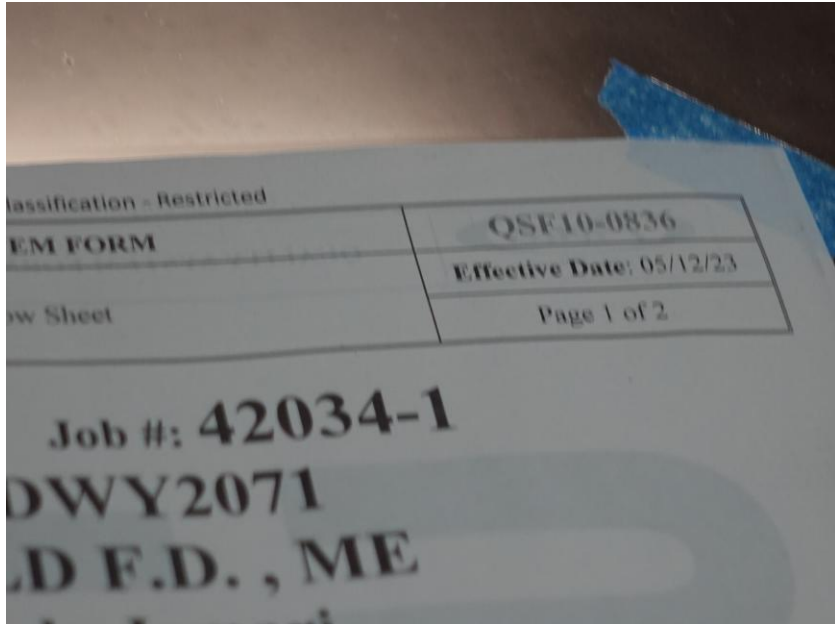
Job# 42034 : PWO# 32741714

---

Status as of June 12, 2026

In this report the pump house, tank, and body were merged with the chassis. In the next report your apparatus may complete initial assembly and begin final assembly.





DSC07283



DSC07284



DSC07285



DSC07286



DSC07287



DSC07288



DSC07289



DSC07290



DSC07291



# ALLEGIANCE<sup>TM</sup>

FIRE & RESCUE



<https://allegiancefr.com>



An Oshkosh Corporation Company