

In-Production Photo Report for

Freightliner Tanker

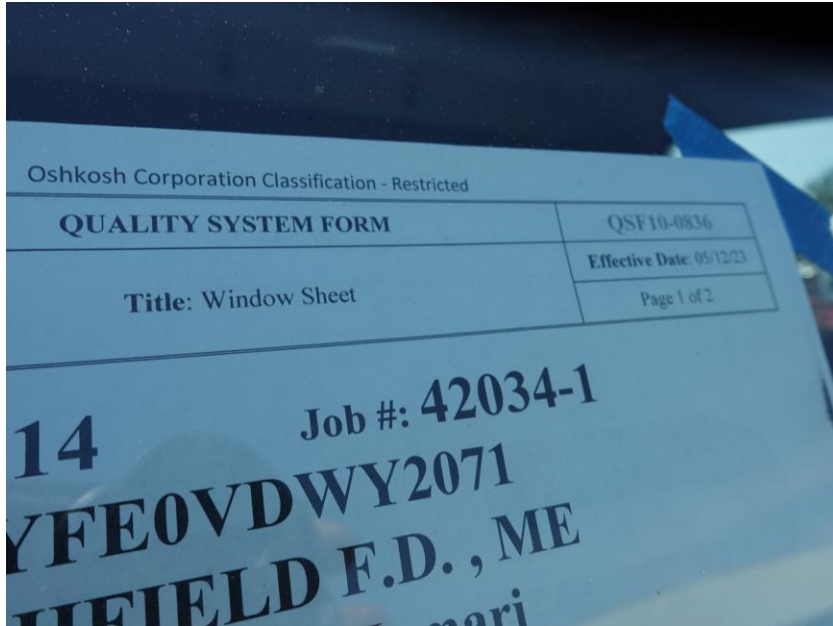
Litchfield Fire Department, ME

Job# 42034 : PWO# 32741714

Status as of May 15, 2026

In this report your commercial chassis was staged to begin preparations for fire and emergency use, the pump house was staged to begin testing, the tank completed paint, and the body remained staged. In the next report chassis prep may begin, the pump house may complete testing, the tank may be staged, and the body may begin initial assembly.





DSC07226



DSC07227



DSC07228



DSC07229



DSC07230



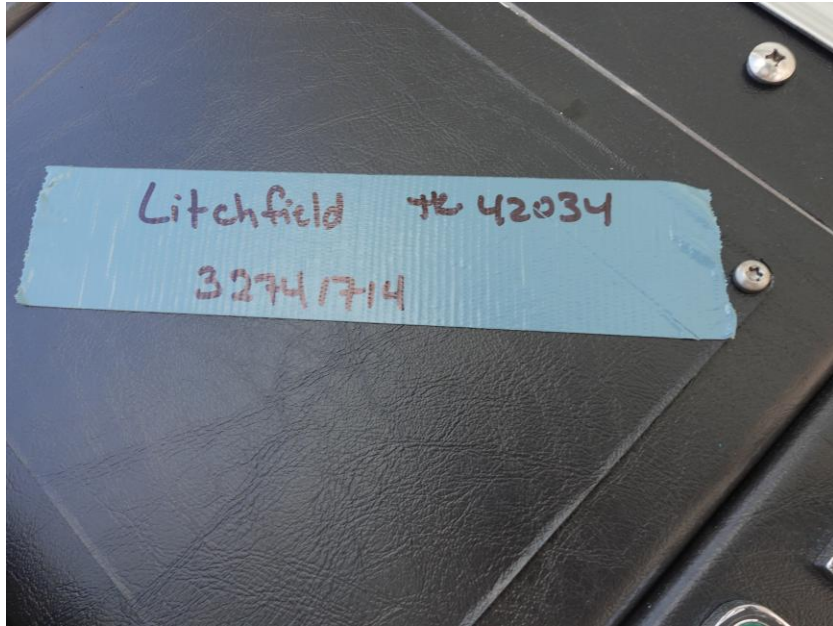
DSC07231



DSC07232



DSC07233



DSC07234



DSC07235



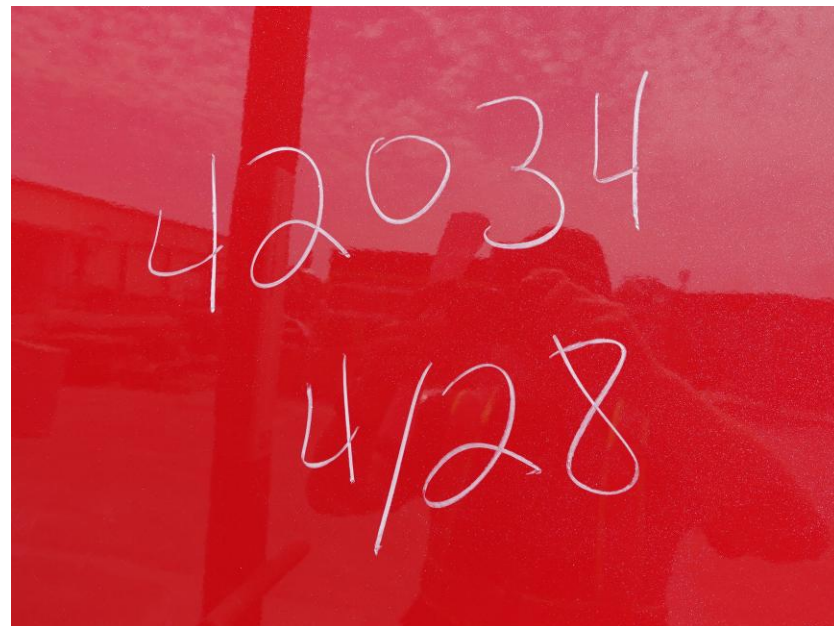
DSC07236



DSC07237



DSC07238



DSC07346



DSC07347



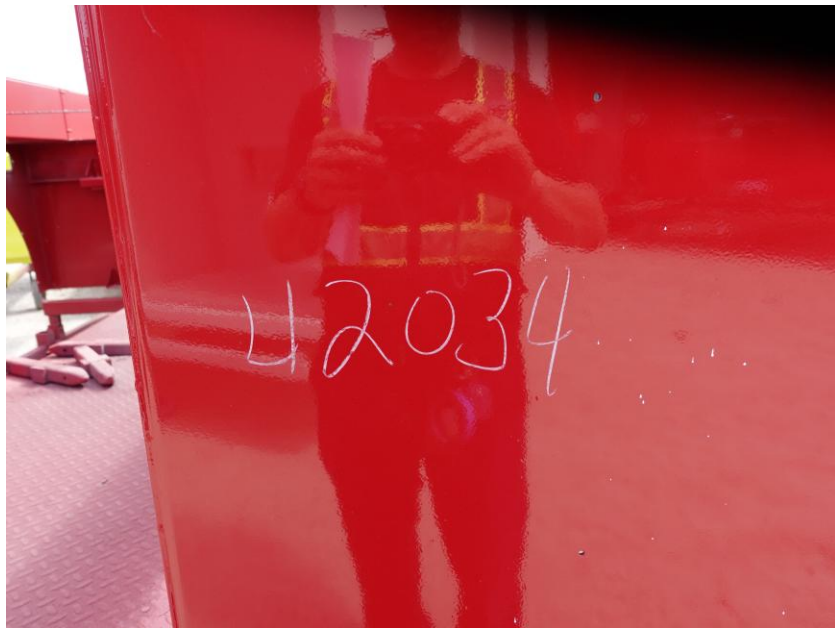
DSC07348



DSC07349



DSC07350



DSC07388



DSC07389



DSC07390



DSC07391



DSC07392



ALLEGIANCETM

FIRE & RESCUE



<https://allegiancefr.com>



An Oshkosh Corporation Company