

In-Production Photo Report for

Saber Pumper

Scarborough Fire Department, ME

Job# 44414 : PWO# 34383489

Status as of May 22, 2026

In this report your cab and pump house were merged with the frame and assembly continued while the body was in queue to be mounted. In the next report the body may be merged with the frame at the start of initial apparatus assembly followed by the start of final assembly.



Dishwash Corporation Classification - Restricted

QUALITY SYSTEM FORM	QSF10-0836
Title: Window Sheet	Effective Date: 05/12/23
	Page 1 of 2

489 Job #: 44414-1
FITB029563
BOROUGH FIRE DEPARTMENT ME
Mori, Christina
Fire & Rescue

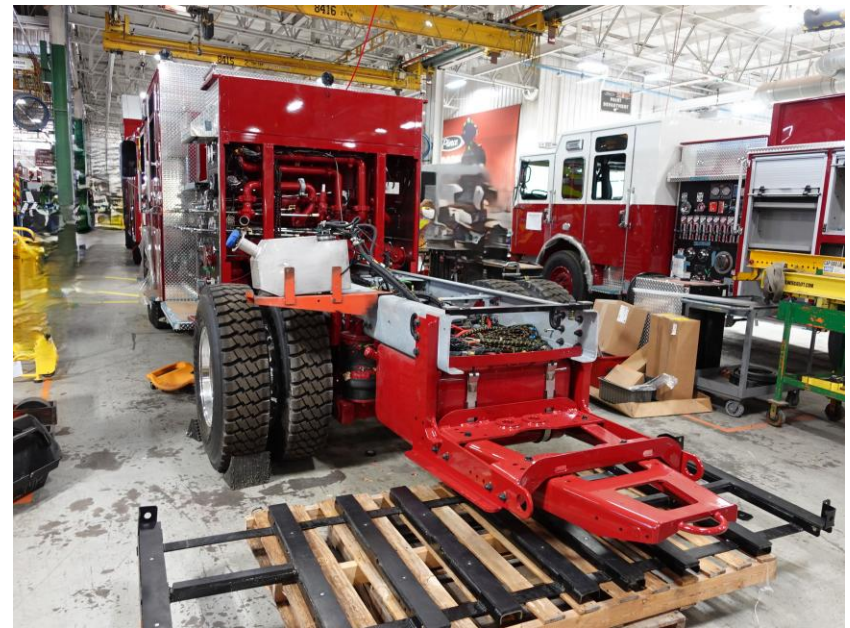
DSC07153



DSC07154



DSC07155



DSC07156



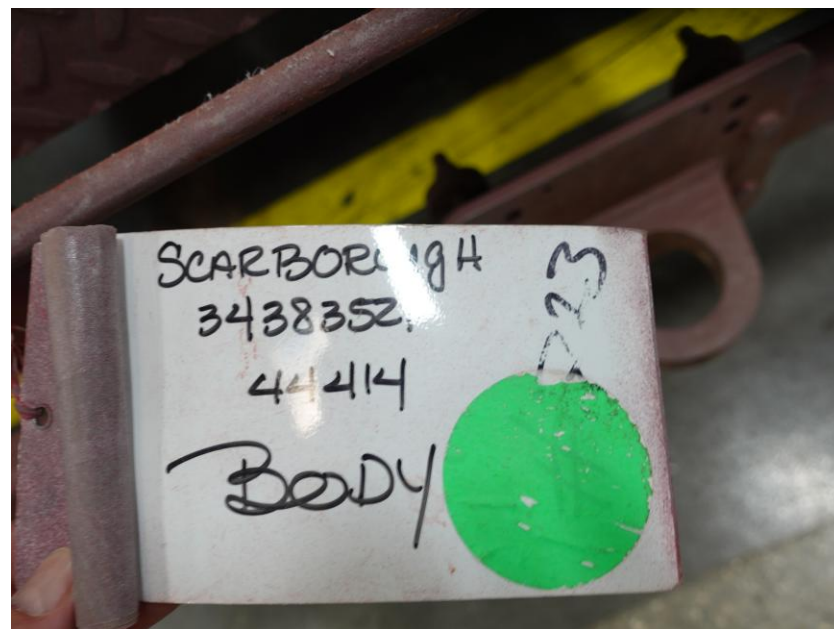
DSC07157



DSC07158



DSC07159



DSC07160



DSC07161



DSC07162



DSC07163



DSC07164



DSC07165



ALLEGIANCETM

FIRE & RESCUE



<https://allegiancefr.com>



An Oshkosh Corporation Company