

# In-Production Photo Report for

Enforcer Aerial Tower

Hudson Fire Department, MA

Job# 44789

---

Status as of April 24, 2026

In this report your apparatus continued testing. When testing completes it will release to quality and graphics where any remaining content will be applied. Once finished it will be made ready for your customer acceptance inspection. This is the last scheduled report.





DSC02476



DSC02477



DSC02478



DSC02479



DSC02480



DSC02481



DSC02482



DSC02483



DSC02484



DSC02485



DSC02486



DSC02487



DSC02488



DSC02489



DSC02490



DSC02491



DSC02492



DSC02493



DSC02494



DSC02495



DSC02496



DSC02497



DSC02498



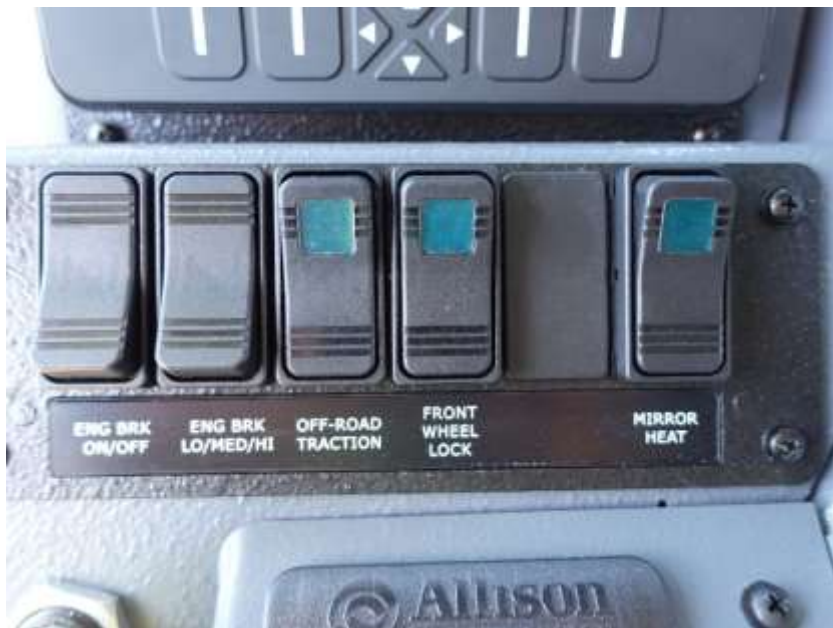
DSC02499



DSC02500



DSC02501



DSC02502



DSC02503



DSC02504



DSC02505



DSC02506



DSC02507



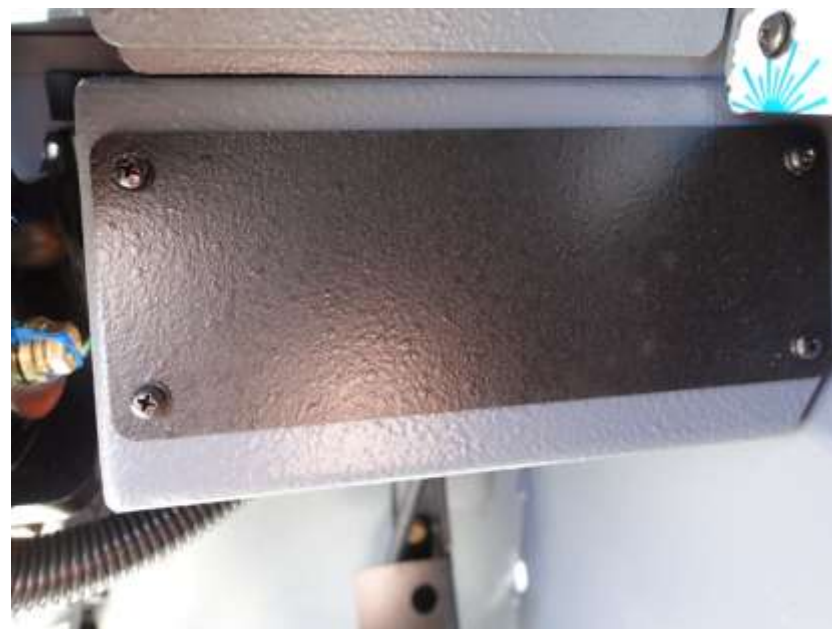
DSC02508



DSC02509



DSC02510



DSC02511



DSC02512



DSC02513

<b>Manufactured by: Pierce Manufacturing, Inc.</b> - Custom Designed and Manufactured Exclusively For <b>TOWN OF HUDSON FD</b>		Vehicle Family: T08H2V0C0V01 Sub-Category: Emergency Vehicle THIS VEHICLE COMPLIES WITH U.S. EPA REGULATIONS FOR 2020 MODEL YEAR HEAVY-DUTY VEHICLES. THIS VEHICLE WAS CERTIFIED AS AN EMERGENCY VEHICLE UNDER 41 CFR 101.7 (b)(1)	
Mo./Yr of Mfg	Apr - 2026	Job No.	44789
GVWR	35,381 KG ( 78,000 LB)	Tire-Limited Max Speed	65 mph
GAWR		TIRES	RIMS
Front	10,896 KG ( 24,000 LB)	425/65R22.5 (L)	22.50x12.25
Rear	24,494 KG ( 54,000 LB)	12R22.5 (H)	22.50x8.25
		COLD TIRE INFLATION	
		827 kPa ( 120 PSI)	827 kPa ( 120 PSI)
THIS VEHICLE CONFORMS TO ALL APPLICABLE U.S. FEDERAL MOTOR VEHICLE SAFETY EFFECT ON THE DATE OF MANUFACTURE SHOWN ABOVE.			
VIN	4P1BCA0F1TA029450	TYPE	CUSTOM HIGH GRADE PAINT FINISH
Res	Pierce No. 88	Stickers	Autocall 87L0 Base
Name	Pierce No. 0	Stickers	88
Fluid Capacities Component Engine: 60/12 36.1 Trans: 4800 CVT 36.2 Fuel Tank: 100.0 Power Steering: 10.0 Front Axle: 10.0 Rear Axle: 10.0 Total: 100.0			

DSC02514



DSC02515



DSC02516



DSC02517



DSC02518



DSC02519



DSC02520



DSC02521



DSC02522



DSC02523



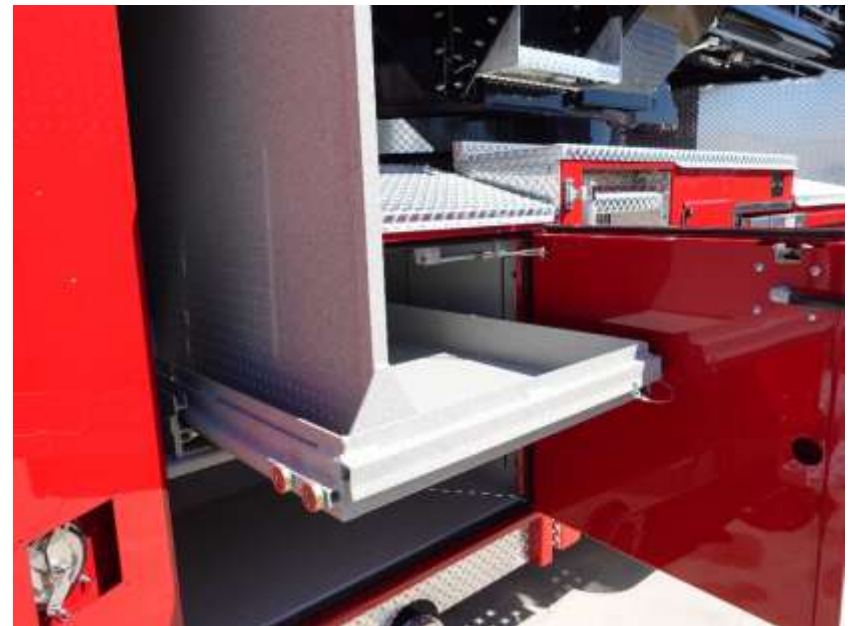
DSC02524



DSC02525



DSC02526



DSC02527



DSC02528



DSC02529



DSC02530



DSC02531



DSC02532



DSC02533



DSC02534



DSC02535



DSC02536



DSC02537



DSC02538



DSC02539



DSC02540



DSC02541



DSC02542



DSC02543



DSC02544



DSC02545



DSC02546



DSC02547



DSC02548



DSC02549



DSC02550



DSC02551



DSC02552



DSC02553



DSC02554



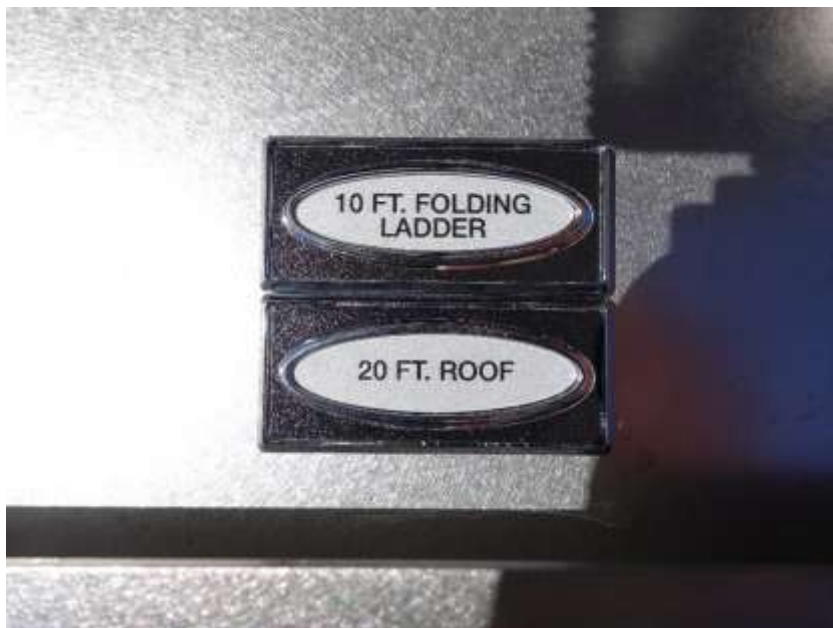
DSC02555



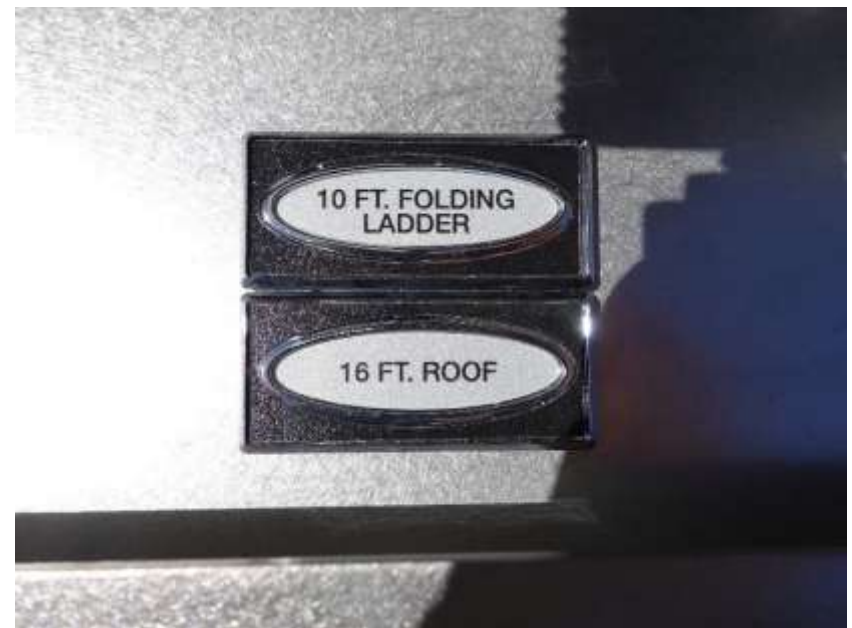
DSC02556



DSC02557



DSC02558



DSC02559



DSC02560



DSC02561



DSC02562



DSC02563



DSC02564



DSC02565



DSC02566



DSC02567



DSC02568



DSC02569



DSC02570



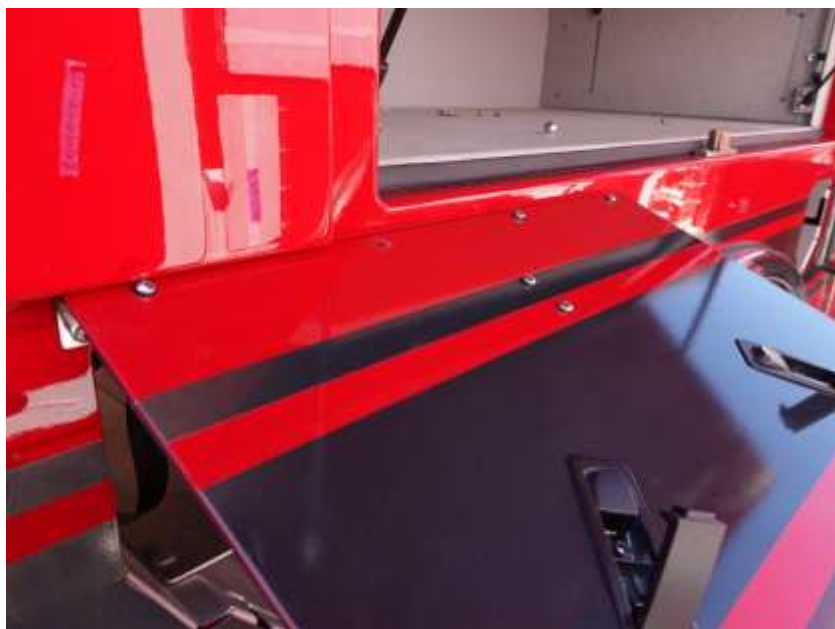
DSC02571



DSC02572



DSC02573



DSC02574



DSC02575



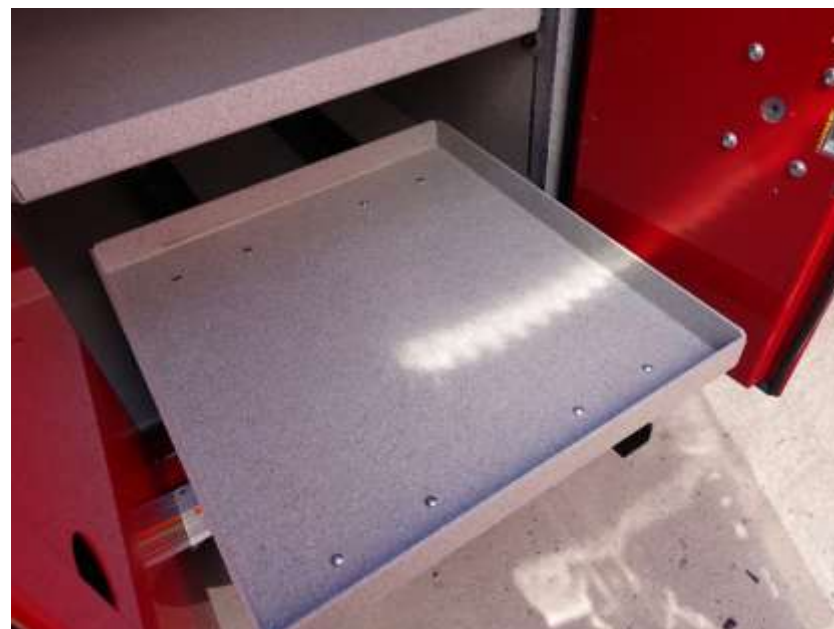
DSC02576



DSC02577



DSC02578



DSC02579



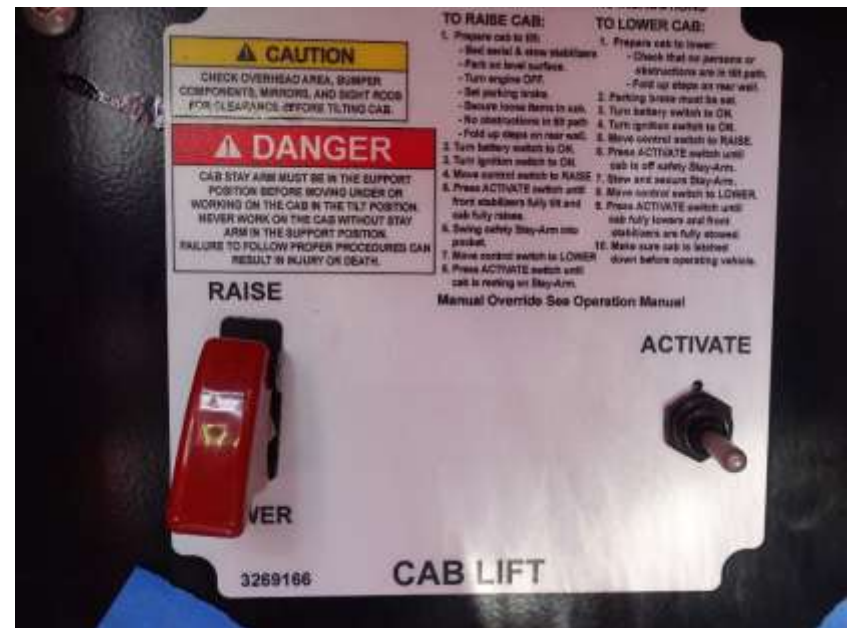
DSC02580



DSC02581



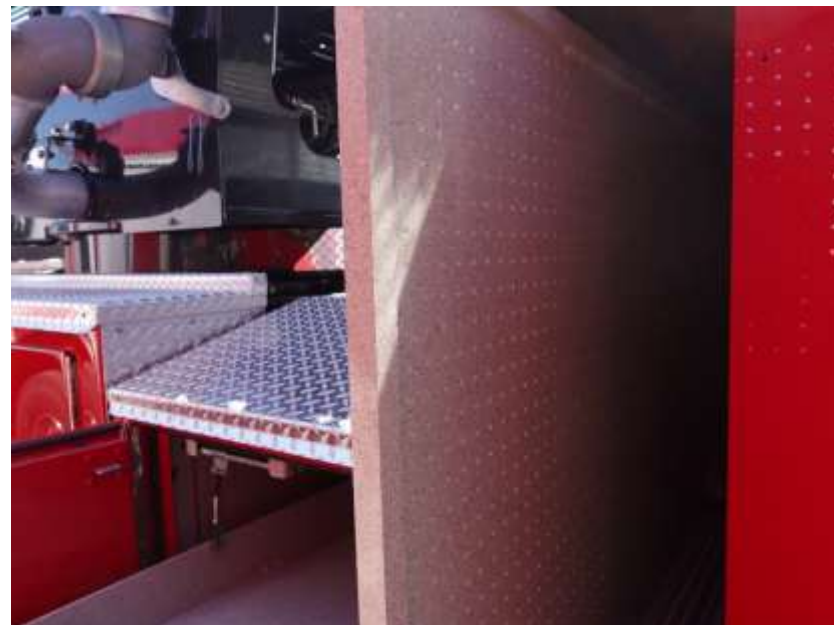
DSC02582



DSC02583



DSC02584



DSC02585



DSC02586



DSC02587



DSC02588



DSC02589



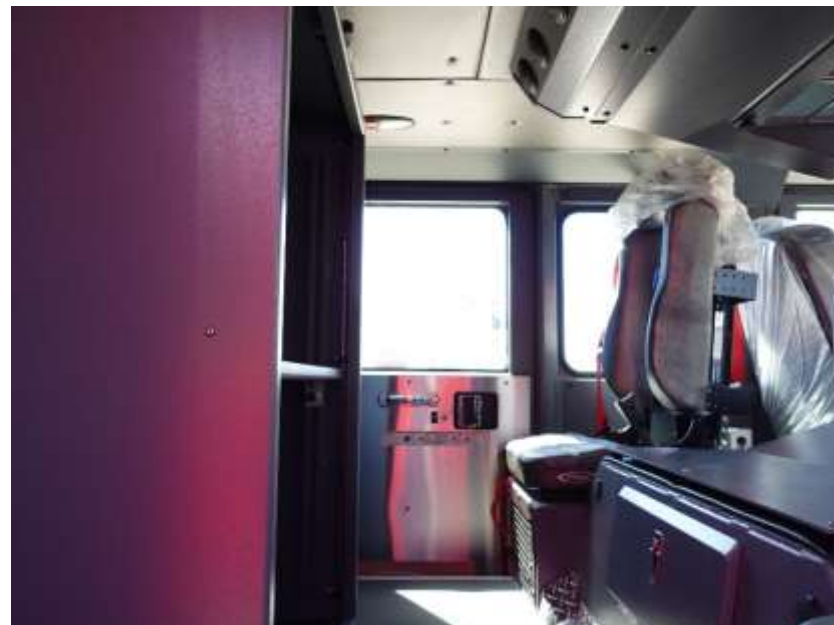
DSC02590



DSC02591



DSC02592



DSC02593



DSC02594



DSC02595



DSC02596



DSC02597



DSC02598



DSC02599



DSC02600



DSC02601



DSC02602



DSC02603



DSC02604



DSC02605



DSC02606



DSC02607



DSC02608



DSC02609



DSC02610



DSC02611



DSC02612



DSC02613



DSC02614



DSC02615



DSC02616



DSC02617



DSC02618



DSC02619



DSC02620



DSC02621



DSC02622



DSC02623



DSC02624



DSC02625



DSC02626



DSC02627



DSC02628



DSC02629



DSC02630



DSC02631



DSC02632



DSC02633



DSC02634



DSC02635



DSC02636



DSC02637



DSC02638



# ALLEGIANCE<sup>TM</sup>

FIRE & RESCUE



<https://allegiancefr.com>



An Oshkosh Corporation Company