

In-Production Photo Report for

Enforcer Aerial

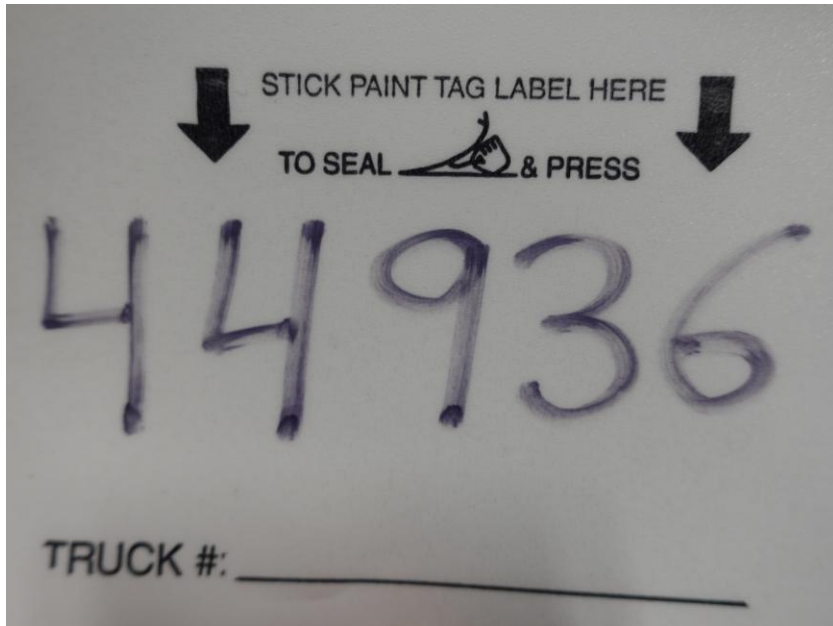
Swampscott Fire Department, MA

Job# 44936

Status as of April 10, 2026

In this report your cab continued initial assembly, the frame build continued, the transverse compartment was unavailable for photos, the torque box arrived and was staged, and the body completed paint. In the next report, your cab may complete initial assembly, the frame build may continue, the transverse may be available to photograph, and the body may remain staged to begin initial assembly.





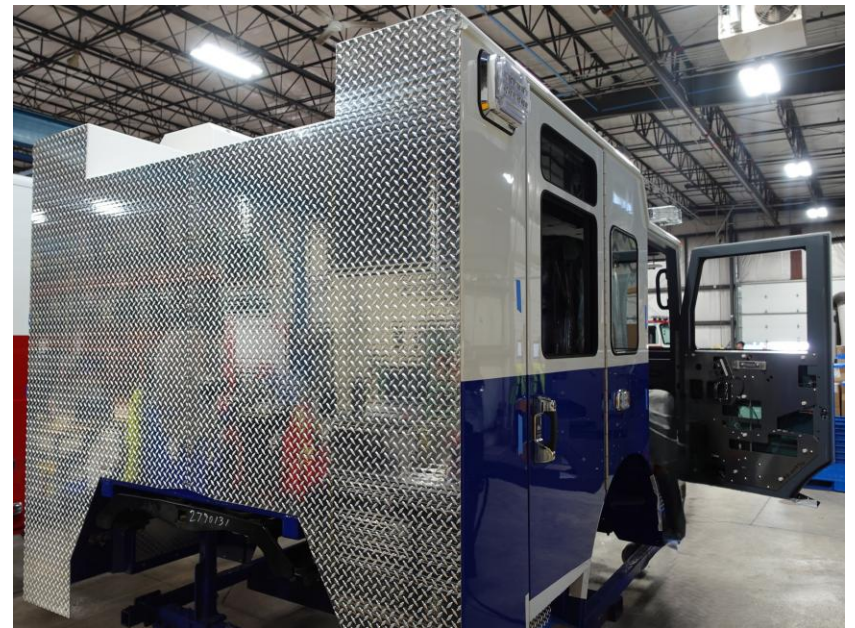
DSC02101



DSC02102



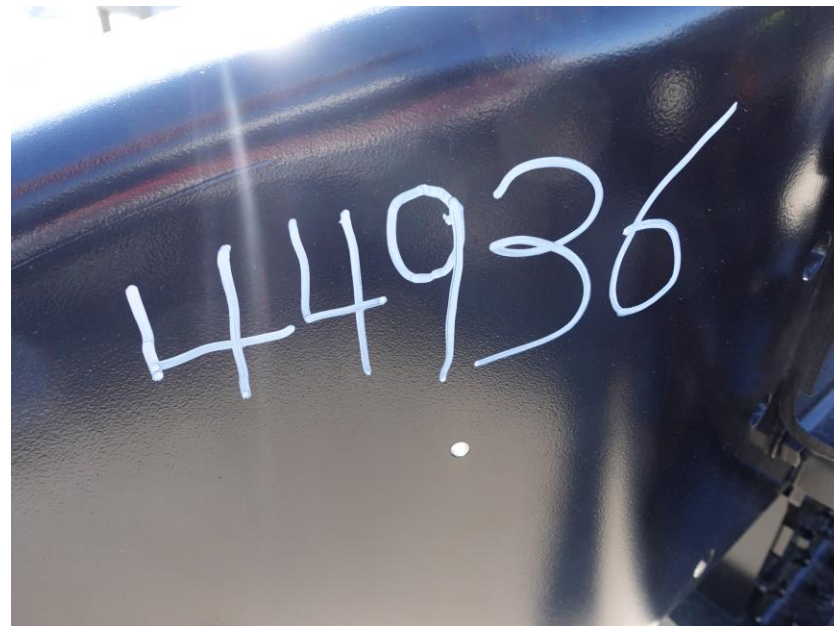
DSC02103



DSC02104



DSC02105



DSC02000



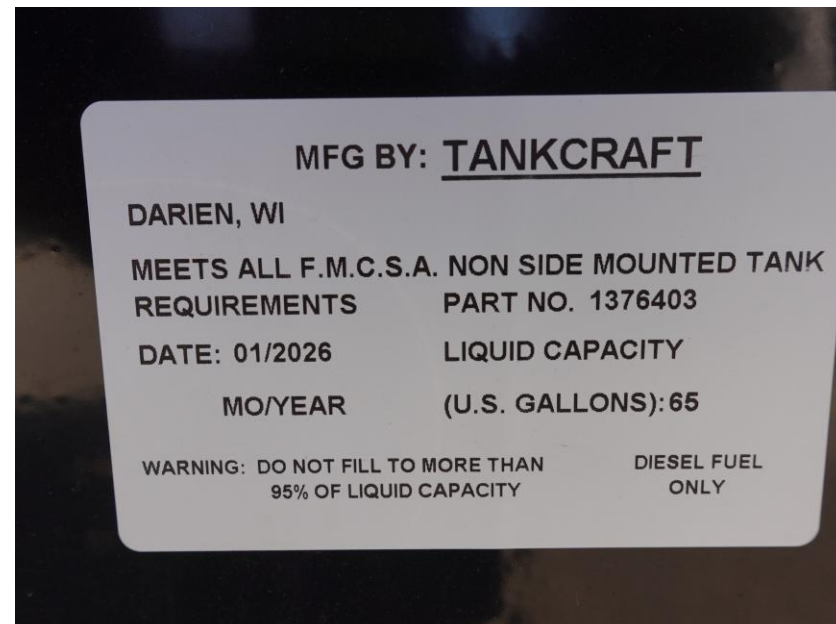
DSC02001



DSC02002



DSC02003



DSC02004



DSC02005



DSC02006



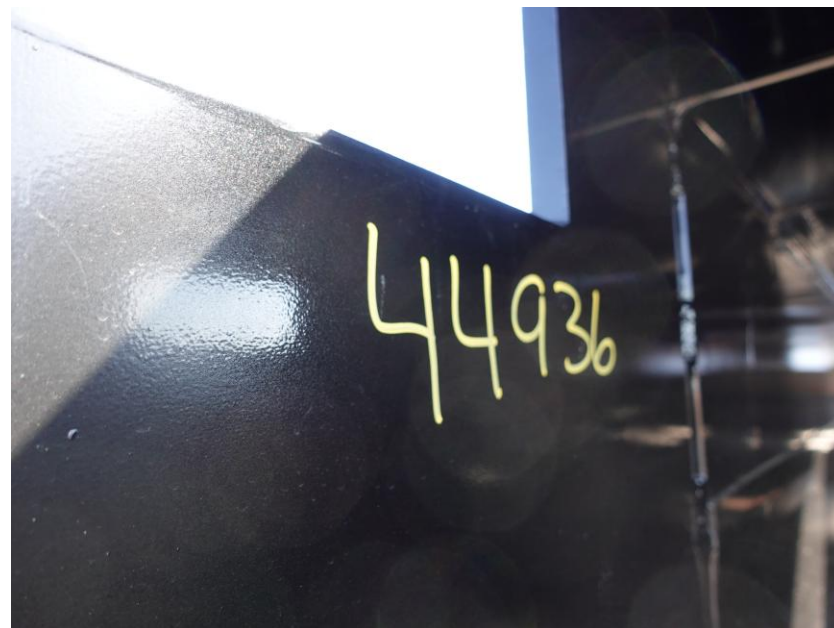
DSC02007



DSC02008



DSC02009



DSC04046



DSC04047



DSC04048



DSC04494



DSC04495



DSC04496



DSC04497



DSC04498



ALLEGIANCETM

FIRE & RESCUE



<https://allegiancefr.com>



An Oshkosh Corporation Company