

In-Production Photo Report for

Enforcer Aerial

Swampscott Fire Department, MA

Job# 44936

Status as of April 17, 2026

In this report your cab was merged with the frame, the transverse remained unavailable for photos, the torque box began initial assembly, and the body completed initial assembly.

In the next report the torque box may be merged with the chassis while assembly may continue, the transverse may be available to photograph, and the body may remain staged.





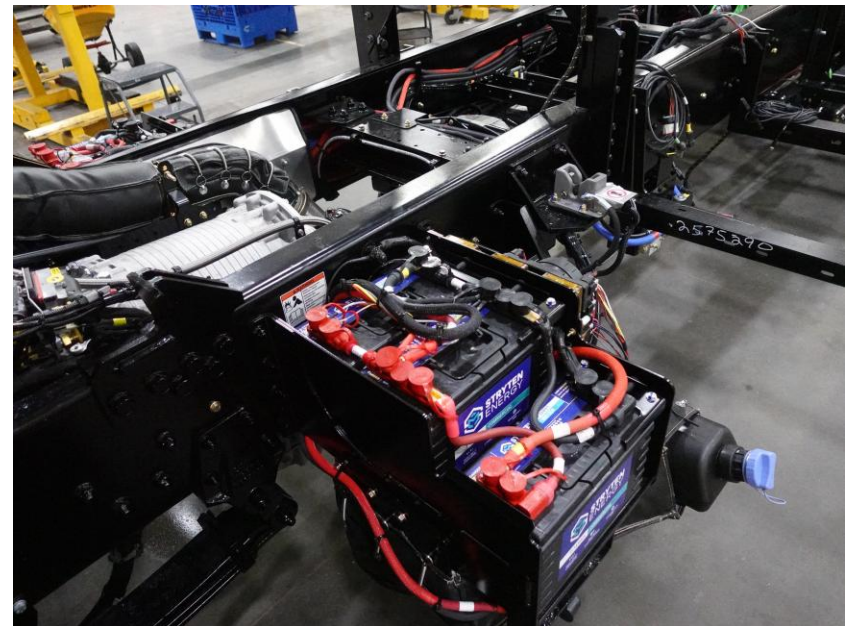
DSC04011



DSC04012



DSC04013



DSC04014



DSC04015



DSC04016



DSC04017



DSC04018



DSC04019



DSC04020



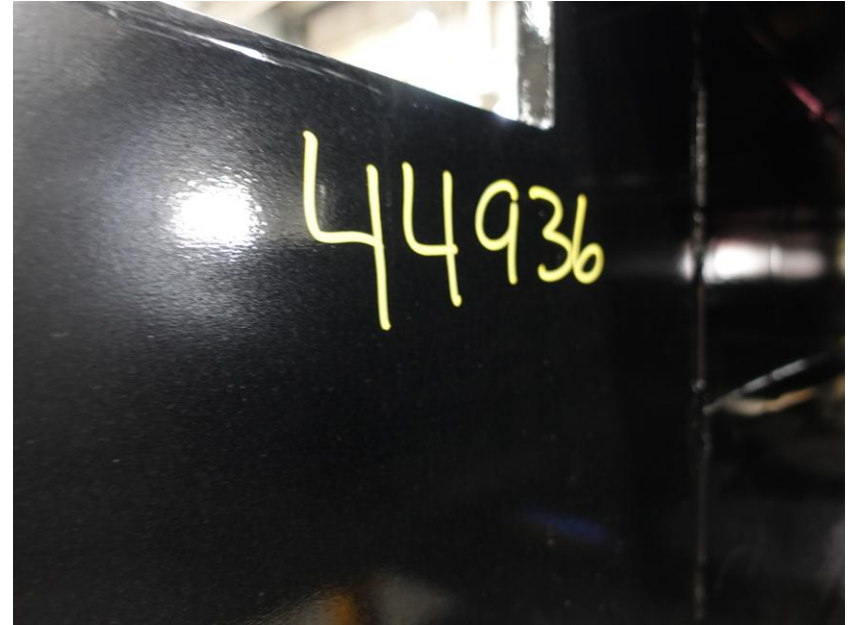
DSC04021



DSC04022



DSC04023



DSC04006



DSC04007



DSC04008



DSC04009



DSC04010



DSC04509



DSC04510



DSC04511



DSC04512



DSC04513



ALLEGIANCETM

FIRE & RESCUE



<https://allegiancefr.com>



An Oshkosh Corporation Company